

# Pennsylvania Simmental Association

## NEWSLETTER

SPRING 2014

### Inside....

#### Page 2

Feeder & Carcass Program

#### Page 3

PA Farm Show Results

#### Page 4

Spring Female Sale Preview

#### Page 5

Harmful Weed Found in PA

#### Page 5

PJSA Leaders Step Down

#### Page 6

PA Beef Expo Schedule

#### Page 6

New ASA Blogs

#### Page 7

PSA Awards and Elections

#### Page 8

PJSA News

#### Page 9

Dates To Remember

#### Page 9

PSA Positions Open

#### Page 10

Orley Wins ASA Election

#### Page 11

PSA Kitchen

## Spring Female Sale Preview

The Spring Simmental Female Sale is coming up in a few weeks. Kevin Bishop generously donated eleven bulls' semen to benefit the PJSA.

*See page 4 for more information, complete list of donated semen, and preview of consignments!!!*



*Above: Open March heifer, consigned to the Spring Female Sale by Stewart's Simmentals.*



*Above: Grand Champion Simmental Bull, exhibited by PSA member Messick Farms.*

## Pennsylvania Farm Show Results

### Simmental Wins Supreme

Simmental and Simmental percentage cattle dominated the 2014 PA Farm Show.

*Please see page 3 for show highlights.*

## PA Beef Expo Schedule

For the second year, PA Beef Expo activities will be split between the Livestock Evaluation Center in Pennsylvania Furnace, and the PA Farm Show Complex in Harrisburg,

*Please see page 6 for schedules of both venues.*







# Pennsylvania Feeder Cattle & Carcass Improvement Program

Enhancing the reputation of Pennsylvania cattle

## Level One:

- Vaccinations with required record keeping
- Identify breed of sire
- Individual animal identification

## Level Two:

(Level I + Level II requirements)

- Weaned
- Minimum 45 days on feed

## Level Three:

(Level I + Level II + Level III requirements)

- RFID cattle identification- Center for Beef Excellence certified
- BQA certified



## Level Four:

(Level I + Level II + Level III + Level IV requirements)

- Herd sire identified with EPDs and/or:
- Genomic testing

CE	BW	WW	YW	MCE	MM	MWW
10.0	1.6	60.4	85.1	5.1	18.6	48.8

## Program Goals:

1. Improve the health and genetics of Pennsylvania cattle.
2. Identify and market feeder cattle that meet superior health and/or genetic history to improve their marketability and reward producers for their efforts.
3. Improve the communication between buyers and sellers.
4. Enhance the economic opportunities for Pennsylvania cattle and Pennsylvania auction barns.

Access to additional  
markets including  
local retail and  
farm markets.



Center for Beef Excellence  
2301 N. Cameron Street, Room 303  
Harrisburg PA 17110  
717-705-1689

Learn more about this and  
other programs at:

ANoganCBE@gmail.com  
www.BeefExcellence.com

www.facebook.com/PennsylvaniaCenterforBeefExcellence

# Pennsylvania Farm Show Results

Farm Show Complex, Harrisburg, PA

Open Shows held January 3 and 6, 2014 • Junior Shows held January 5, 2014

Simmental genetics left their mark at the 2014 Pennsylvania Farm Show! Supreme Champion Beef Female was awarded to the Open Simmental Show's Grand Champion Heifer DAF Reba Z20 owned by Jackson Mattocks of Guys Mills.



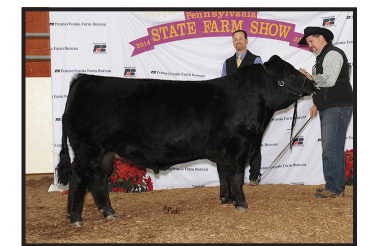
Grand Champion Simmental Female and Supreme Female, DAF Reba Z20, exhibited by Jackson Mattocks, Guys Mills, Pa.



Reserve Grand Champion Simmental Female, DHF Perfect Rose, exhibited by Ian Erdely, Perryopolis, Pa.



Grand Champion Simmental Bull, MF Rising Star Z660, exhibited by Joseph Messick, Messick Farms\*, Middletown, Pa. (L-R): Joseph Messick, Patty Kuharic, Mylin Messick, judge Ryan Rathman, Sarah Limbert.



Reserve Grand Champion Simmental Bull, PVSM Phoenix Z22, exhibited by Laurie Meyers, Powell's Valley Simmentals\*, Halifax, Pa. (L-R): judge Ryan Rathman, David Downs.

Included in the All Other Breeds division in their first year showing at the Pennsylvania Farm Show, percentage Simmentals swept the Junior show and took three of the top four placings in the Open show.



Grand Champion AOB Female, GRANNY'S MS B CHOPPER 86, exhibited by Rylee Stockdale, Dayton, Pa.



Reserve Grand Champion AOB Female, CSCX Macy 512Z, exhibited by James, Jackie & Sara Campbell of Campbell Show Calves\*, Sycamore, Pa. (L-R): Jamie Campbell, judge Chan Phillips, Sarah Campbell.



Grand Champion AOB Bull, PVSM Stylish Moooves, exhibited by Laurie Meyers of Powell's Valley Simmentals\*, Halifax, Pa. (L-R): Laurie Meyers, judge Chan Phillips, Bradley Feight.



Grand Champion Simmental Female of the Junior Show, DHF Perfect Rose, exhibited by Ian Erdely, Perryopolis, Pa.



Reserve Grand Champion Simmental Female of the junior show, SHCC/ KLCL I'll Be a Star, exhibited by Maria Angelo, Titusville, Pa.

Grand Champion AOB Female of the junior show, Wheeler/KNKCS 240 Zipper, exhibited by Jessica Butler, Dawson, Pa.



Reserve Grand Champion AOB Female of the junior show, GRANNY'S MS B CHOPPER 86, exhibited by Rylee Stockdale, Dayton, Pa.

\*PSA/PJSA member



## Spring Simmental Female Sale

Friday, March 28, 2014

Livestock Evaluation Center, Pennsylvania Furnace, PA

Contact Sale Manager for print catalog, or see the PSA's website [www.pasimmental.com](http://www.pasimmental.com) for online catalog!

If you have any questions, please contact:

### Sale Manager Classic Sales

Chris Brown  
304-290-8383  
[classicsim@aol.com](mailto:classicsim@aol.com)

### PSA President

Laurie Meyers  
717-350-2516  
[Laurie@pvsimm.com](mailto:Laurie@pvsimm.com)

Simmental Sale will be held immediately following the Performance Tested Bull Sale at the LEC.

Livestock Evaluation Center (LEC)  
1494 West Pine Grove Road  
PA Furnace, PA 16865

### Donation Semen Lots

Proceeds will benefit the Pennsylvania Junior Simmental Association. Semen donated by Kevin Bishop.

- 5 - ES DAKOTA
- 3 - TRIPLE C INVASION
- 2 - GFI PERFECTOR
- 10 - WAR NITRO
- 6 - TRIPLE C HIDDEN POWER
- 2 - WESTFALL CROSSFIRE
- 3 - RCC/TCF TEMPTATION
- 7 - SAC MR. MT
- 4 - MEYERS BONAS
- 4 - PCC NIGHT MOVES
- 2 - CCR AMERITRADE



### Lot #27 & 27A Cow/Calf Pair PB • BD: 3-03-12

Sire: Triple C Bettis S72J  
Dam: HEB BJ Nancy

Spotlite is a well-grown, big bodied bred heifer that will sell with a Built Right calf at side. Spotlite will be a nice addition to anyone's herd.

Consigned by SASA Farms



### Lot #24 — Bred Heifer PB • BD: 9-3-12

Sire: HTP SVF In Dew Time  
Dam: D&A Midge 11X  
AI bred 11-28-13 to GW Premium Beef 021 TS (ASA# 2370545)



### Lot #15 — Open Heifer PB • BD: 3-2-13

Sire: Yardley High Regard W242  
Dam: MF Miss Built Right U553  
Maternal sib topped Stars & Stripes Sale at \$14,000



### Lot #13 — Open Heifer PB • BD: 3-25-13

Sire: MR NLC Upgrade U8676  
Dam: Ring of Fire  
Full sister was a high selling open in Land of Lincoln Sale



### Lot #1 — Embryos 3 Embryos (Guaranteeing 1)

Sire: FBF1 Combustible  
Dam: SS/TBT Khloe 200Y  
Resulting calves will be ¾ Simmental



### Lot #3 — Pregnancy PB • Due: 9-20-14

Sire: JM X1 That's Right  
Dam: Ring of Fire  
Recip Cow: JM Bexery TS (PB Simmental) ASA # 2390112



### Lot #2 — Embryos 3 Embryos (Guaranteeing 1)

Sire: Mr HOC Broker  
Dam: EBS Headliners Blk Fancy  
Out of Buena Vista Simmentals' lead donar

## POWELL'S VALLEY SIMMENTALS Stars & Stripes Sale Consignments

May 3, 2014 • Mountain View Farm, Gettysburg, PA

### Cow/Calf Pair



### PVSM Huckleberry

BD: 2-10-12 • Purebred Simmental  
GWS Ebony's Trademark 6N X PVSM Mistletoe  
Upgrade heifer calf at side, born 1-30-14

### Bred Heifer



### PVSM Ginger Snap

BD: 10-14-12 • Purebred Simmental  
SAS T101 Sweet Meat X LLL Miss Fortune  
A.I. bred to Mr NLC Upgrade U8676 – sexed heifer semen.

### Cow/Calf Pair

### PVSM Honey Bear

Birthdate: 3-30-12  
Purebred Simmental  
Kappes Trailblazer S516 X  
Mohlers Ms L12  
Longs Shear Pleasure calf at side.

*This is our first year consigning to the Stars & Stripes Sale, and we look forward to seeing you there!!!*

Website:  
[www.pvsimm.com](http://www.pvsimm.com)

Contact Laurie Meyers with any questions!  
Phone: 717-350-2516 Email: [Laurie@pvsimm.com](mailto:Laurie@pvsimm.com)

See our website for catalog as soon as it is available!

## Harmful Weed Found in Pennsylvania

Palmer amaranth has been identified in southeast Pennsylvania, and is possibly in the south central region, as well. Although it more commonly grows from southern Delaware to Kansas, Pennsylvania has not yet seen the impact of this invasive type of pigweed. Growing at a rate of close to three inches per day and reaching six to eight feet in height, Palmer amaranth can cause yield losses of up to 78% for soybeans and 91% for corn.

For more information, including photographs, descriptions, and what to do if you suspect Palmer amaranth is growing in your fields, please go to the Penn State Extension website, [extension.psu.edu](http://extension.psu.edu), and search for "Palmer amaranth."

### REGISTERED SIMMENTAL CATTLE

BRED HEIFERS COWS CALVES HEIFERS



CURRY WAGNER JR  
717.943.2262

1423 SANDBEACH RD  
HUMMELSTOWN, PA 17036

CURRY WAGNER  
717.991.0387

## PJSA Leaders Step Down

After many years of exemplary service, Pennsylvania Junior Simmental Association leaders Annette Downs and Sally Runkle are stepping down. The Pennsylvania Simmental Association would like to express our deepest appreciation of their countless hours of work — they have left very large shoes to fill!!

At the 2014 Pennsylvania Farm Show, Sarah Limbert, Rhonda Arndt, and Brent and Lori Fox were chosen as the PJSA advisors.



## Pennsylvania Beef Expo Schedule

March 27-29, 2014

All events split between the Livestock Evaluation Center and PA Farm Show Complex.

### Office Headquarters

Jim Sharp  
Farm Show Complex  
2300 N Cameron St  
Harrisburg PA 17110  
717-787-2905  
farmshow@pa.gov

### PCA Office

Ann Nogan  
127 Tompkinsville Road  
Scott Township, PA 18433  
570-254-6856  
pacattlemen@aol.com

### Show Chairman

Mike LaRue  
630 Ridge Road  
York Springs, PA 17372  
717-557-8295  
Mcrue25@hotmail.com

### Thursday, March 27th (Events split between the LEC and Farm Show Complex)

10:00 am – 4:00 pm..... Trade Show Setup (LEC)  
9:00am – 3:00pm..... Producer Education (Farm Show Complex)

### Friday, March 28th (Events split between the LEC and Farm Show Complex)

9:00 am – 4:00 pm.....Trade Show Open (LEC)  
10:00 am – 3:00 pm.....Trade Show Setup (Farm Show Complex)  
12:00 noon.....Performance Tested Bull Sale (LEC)  
3:00 pm?..... **Simmental Female Sale following Bull Sale — see page 4!!**  
3:00 pm – 6:00 pm.....Cattle Check-In (Farm Show Complex)  
7:00 pm – 9:30 pm.....Showmanship Clinic sponsored by Purina (Farm Show Complex)

### Saturday, March 29th (Farm Show Complex Harrisburg)

6:30 am – 8:00 am .....Cattle Check-In  
8:00 am .....Trade Show Open  
10:00 am.....Jackpot Show — Steers immediately following Heifers  
5:30 pm ..... PCA Annual Banquet & Annual Meeting (Farm Show Complex Harrisburg)  
**RAFFLE PRIZES AWARDED AT BANQUET**

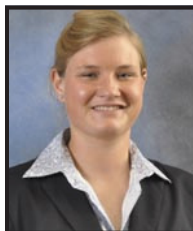
### SILENT AUCTION AND GREAT FOOD AVAILABLE AT THE LEC

**Livestock Evaluation Center (LEC)**  
1494 West Pine Grove Road  
PA Furnace, PA 16865

**Pennsylvania Farm Show Complex**  
2300 North Cameron Street  
Harrisburg PA 17110-9443

## New ASA Blogs Keep You Up-To-Date

American Simmental Association now has more reading to keep you occupied and in the know. This new reading won't be arriving in your mailbox . . . hop on your internet connection, be it your cell phone, iPad, laptop and check out the new blogs, **Have You Herd?** and **tReg**.



Courtney Wesner, contributor to *tReg*.

*Have You Herd?* is the source of information to keep up-to-date on issues pertaining to DNA and Total Herd Enrollment (THE) with writer, Leoma Wells. For those of you who battle the tabs of Herdbook Services shortly after logging in, Leoma has everything from "how to" pieces to deadline reminders. *Have You Herd?* has DNA updates you can get to far faster than you can dial the ASA number to try and catch Leoma at 4:30 on a Thursday afternoon.

For our loyal Register readers, *tReg*, short for *the Register*, goes beyond the bounds of print to delve deeper into the stories of Simmental and SimGenetics producers, programs, and happenings.

While it's certainly not the same as holding these shiny pages, the *tReg* team of writers, Courtney Wesner, Dr. Jackie Atkins, and I, bring you more members, more programs, more events.

**Have You Herd?** may be read by going to [www.simmental.org/haveyouherd](http://www.simmental.org/haveyouherd)

**tReg** may be read by going to [www.simmental.org/tReg](http://www.simmental.org/tReg)



Leoma Wells, author of *Have You Herd?*

Source: Hannah Wine, ASA eNews

## PSA Awards Banquet and Elections

Saturday, January 4, 2014

Lawnton American Legion Post 998, 4700 Derry Street, Harrisburg, PA 17111

Pennsylvania Simmental Association President Laurie Meyers welcomed everyone to the annual meeting and awards banquet held January 4, 2014, at the Lawnton American Legion, Harrisburg, PA. Meyers highlighted the accomplishments of percentage Simmentals in their first year showing at the Pennsylvania Farm Show, continued success of the PSA's sales, and increased demand for Simmental genetics. Elections were held for the four seats left open by outgoing directors Rhonda Arndt, Joe Messick, William Shoemaker, and Les Whitmoyer. Arndt and Messick were not eligible for election due to having served two consecutive terms. Shoemaker and Whitmoyer were re-elected, with David Downs and Jeff



**Breeder of the Year**  
**Powell's Valley Simmentals**  
**Laurie Meyers**

Bradley Feight presenting award to Meyers.

continued on page 10



**2014 PSA Board of Directors**

From left: Ron Dziembowski, Galen Graham, David Downs, President Laurie Meyers, Les Whitmoyer, Jeff Feight, Annie Duncan, and Vice President Bradley Feight.

Not pictured: William Shoemaker and William T. Vossler.

## Save the Date!

**Friday, May 2<sup>nd</sup>, 2014**

## Something for Everyone

## 3<sup>rd</sup> Annual All Breed Sale

Sponsored by:



Sale is held in conjunction with the Big East Youth and Jackpot Show at Eastern States Expo Springfield, MA



If you have any questions, please contact:

Ron Dziembowski (508) 868-8836

Gary Bertrand (774) 272-1236

**Go to [SNESA.org](http://SNESA.org) for more information**



PA Junior Simmental Association News

PJSA member Alyssa Angelo is organizing a show to benefit THON, the largest student-run philanthropy in the world. Below is Alyssa's donation request letter — please take a minute to read the letter and consider helping her in this worthwhile cause!

Alyssa Angelo  
 22020 Sherred Hill Road  
 Venango, PA 16440  
 Cell: 814-573-5304

To Whom it may concern:

My name is Alyssa Angelo. I am currently going to be going into my junior year at Cambridge Springs High School. I have been actively involved in the Crawford County 4-H program for the past 8 years. I have exhibited a market project and shown breeding stock every year. I have competed at many state and national shows across the United States where 4-H not only became a hobby, but a passion of mine. I plan to pursue farming and agriculture in my future years. If getting excepted to Penn State Main I will start my future in majoring in Ag Business and minoring in Animal Science. Nothing is better than getting paid for doing something you love. In July of next summer I will be doing the second annual Four Diamonds Preview Show of 2013-2014 as my senior project. As my sister did this project for her senior year I plan to follow in her footsteps and proceed with giving the raised money to THON. Helping to find a cure for childhood cancer. The Four Diamond Preview show will be an event where 4-h members around the state of Pennsylvania will come together with their beef projects that they have worked so hard with to benefit a wonderful cause. All show heifers will be shown by breed, Breed champions will be selected, and an overall supreme heifer will be chosen from the breed champions. All steer classes will be shown by weight and a champion and reserve champion will be selected. Along with the steer and heifer show there will be showmanship classes broken up into three groups: Senior, Intermediate, and beginner. A master showman will be selected from the three group champions. There will also be an adult showmanship class for all the parents to participate in, can't let the kids have all the fun. I am sending you this letter asking for a donation to make my show possible. Any monetary donation will go towards awards and items such as t-shirts, embroidered chairs, and banners. Any items donated will be randomly chosen and given to exhibitors, with all the proceeds going to THON. Your patronage will be recognized on the back of the show t-shirts as well as a banner hanging the day of show.

\*Any Questions? Give me a call (814) 573-5304. If you guys are interested in sponsoring the show please fill out the forum accordingly. My address is on the top of the page, send me your forum and donation together. We appreciate your donation! I would like to thank you for your time and generosity. Your support will greatly be appreciated!  
 -Courage, Honesty, Wisdom, and Strength to fight childhood cancer!

Sincerely,  
 Alyssa C. Angelo

2014 Pennsylvania Junior Simmental Association Advisors

Sarah Limbert  
 119 Parallel Road  
 Pine Grove, PA 17963  
 E-mail: sarah13mae@hotmail.com  
 Phone: (570) 617-7620

Rhonda Arndt  
 441 Hillside Drive  
 Middleburg, PA 17842  
 Email: farmchic3@hotmail.com  
 Phone: (570) 847-9844

Brent and Lori Fox  
 169 Dellville Road  
 Duncannon, PA 17020  
 Email: bfox5@ptd.net  
 Phone: 717-649-2192



DATES TO REMEMBER

- March 14-15**      **Southeast PA Beef Classic Jackpot Show • Harrisburg, PA**  
*For more information, see [www.southeastclassic.com](http://www.southeastclassic.com). The PSA is a proud Gold Plus sponsor of this event.*  
**Sunday, March 9**      **Deadline for early entries.** All entries after this date will be subject to \$15 late fee.  
**Friday, March 14**      Southern States Fitter's Choice Challenge, Showmanship Show  
**Saturday, March 15**      Exhibitor's Meeting, Heifer Show, Steer Show
- March 27-29**      **PA Beef Expo • Harrisburg/PA Furnace, PA**  
*Activities will be split between the Livestock Evaluation Center, PA Furnace, PA and the PA Farm Show Complex, Harrisburg, PA. See page 6 for full Expo schedule. Please see page 4 for more information about our Spring Female Sale!*  
**Thursday, March 27**      Producer Education  
**Friday, March 28**      Trade Show, PA Performance Tested Bull Sale, **Simmental Female Sale**, Showmanship Clinic  
**Saturday, March 29**      Trade Show, Jackpot Show — Steers immediately following Heifers, PCA Annual Banquet/Meeting
- March 28**      **Simmental Female Sale/Bull Test Sale • PA Furnace, PA**  
*Spring Simmental Female Sale and PA Performance Tested Bull Sale will be held in conjunction with the Pennsylvania Beef Expo. Please see page 4 for more information, including sale preview. For catalog, please contact sale manager Chris Brown 304-290-8383.*
- May 2**      **Something for Everyone All Breed Sale • Springfield, MA**  
*Sale is in conjunction with the Big East Youth and Jackpot Show at Eastern States Expo. For more information, go to [SNESA.org](http://SNESA.org).*
- May 3**      **Stars & Stripes Sale • Gettysburg, PA**  
*Contact Sale Manager Doug Parke 859-421-6100 for catalog or with questions.*
- June 15**      **2014 THE Fall Cow Herd Inventory Updates Deadline**  
*Fall Total Herd Enrollment cow herd inventory updates must be submitted to the American Simmental Association by June 15, 2014.*
- June 19-21**      **AJSA Eastern Regional Classic • Winston Salem, NC**  
*May 5, 2014 — AJSA Regional Classic Entry Ownership and Entry Deadline*  
*May 12, 2014 — AJSA Regional Classic Late Entry Deadline*
- July 13-20**      **AJSA National Classic • Louisville, KY**  
*May 15, 2014 — AJSA National Classic Ownership and Entry*  
*May 22, 2014 — AJSA National Classic Late Entry Deadline*

AJSA Classic Scholarship

The AJSA National Classic Lodging Scholarship is awarded to two AJSA members annually and pays the hotel stay costs. Applications are due April 15, winners will be notified April 30, 2014.  
 Please see [www.pajrsimmental.com](http://www.pajrsimmental.com) for application and more information.

PSA Treasurer and Media Coordinator NEEDED!!!!

The Pennsylvania Simmental Association is looking for people to fill the two positions of the association treasurer and media coordinator. The PSA is run by hard-working volunteers, and we need two more to fill these important jobs!!!!  
 For more information, please contact  
 PSA President, Laurie Meyers:  
 Phone: 717-350-2516 • Email: [Laurie@pvsimm.com](mailto:Laurie@pvsimm.com)



## PSA Awards Banquet and Elections

continued from page 7

Feight completing the board of directors. Laurie Meyers and Bradley Feight were retained as president and vice president, respectively.

The American Junior Simmental Association Bronze Merit Award was presented to Pennsylvania Junior Simmental member Jordon Sommer. The PSA's annual award winners were as follows: Junior Member of the Year, Bridget Fox; Senior Member of the Year, Cindy and Les Whitmoyer; Family of the Year, Jim and Billie Cowell; and Breeder of the Year, Laurie Meyers of Powell's Valley Simmentals.

### Senior of the Year Cindy and Les Whitmoyer

Laurie Meyers (left)  
presenting award to  
the Whitmoysers



### Junior of the Year Bridget Fox

Laurie Meyers (left)  
presenting award to  
Fox.



—Black—
—Red—

---

**SHOEMAKER'S SIMMENTAL**

*“Polled Performance Cattle”*

William E. Shoemaker  
Phone: 814-624-0667  
Cell: 412-721-8814  
3839 Milligans Cove Road, Manns Choice, PA 15550  
email: [shoesim@yahoo.com](mailto:shoesim@yahoo.com)

---

A Family Tradition of Quality since 1910

## PSA Member Orley Wins ASA Election



Cliff Orley

Pennsylvania Simmental Association member Cliff Orley, from Lebanon, has won a seat on the Board of Trustees of the American Simmental Association. Orley, along with five other newly elected board members, was sworn in during the ASA's Annual Meeting, held January 18, 2014, in Denver, Colorado. We thank you very much for supporting Mr. Orley, and look forward to his bringing our concerns to the attention of the ASA.

Newcomers J.W. Brune (Overbrook, Kansas) and Erika Kenner (Leeds, North Dakota) were also welcomed to the board, with incumbents Dale Miller (Gildford, Montana) and Blake Nelson (Warner, Oklahoma) retaining their positions. Completing the board, Gordon Hodges (Hamptonville, North Carolina) returned to the board after an eighteen year hiatus.

## PSA CLASSIFIEDS

**Semen For Sale** 5 straws of Sandeens SOS, ½ Simmental, ½ Angus, \$50 per straw. 3 straws of SS Objective T510 0T26, purebred Angus, \$40 per straw. 5 straws of the red Simmental bull WHF Grand Slam H21 — FREE to good home! Powell's Valley Simmentals. Phone: 717-350-2516  
Web: [www.pvsimm.com](http://www.pvsimm.com)

**For Sale: MTV Walnut is an easy keeping, good dispositioned and halter broke bull.** He has been easy to work with, has excellent genetics out of Sand Ranch Hand and Wild Fire Dream. MTV Walnut's dam was a class winner and Junior Heifer Calf Champion at the 2012 Pa. Farm Show open show. He has great epd's: CE 12.5, BW -0.1, WW 53.0, YW 77.0, MCE 13.9, MM 25.2, MWW 51.7, API 118.4, TI 63.4. Contact Les Whitmoyer at 717-673-4837 or 717-865-2245

See page 11 to place your free classified advertisement!

## Advertising

The PSA/PJSA is happy to now offer **FREE** text classifieds for its members in every newsletter! Classified advertisement may be for any item, animal, or a general farm ad, but please do not exceed two hundred fifty characters (not including spaces). Please email ads to [annie@annieduncan.com](mailto:annie@annieduncan.com), or mail to Annie Duncan, 470 Million Dollar Road, Halifax, PA, 17032. Full payments for ads must be received before the deadline to be printed.

## PSA Newsletter Ad Rates

Summer 2014 Issue Ad Deadline: May 10, 2014

### PSA/PJSA Member Advertising Rates

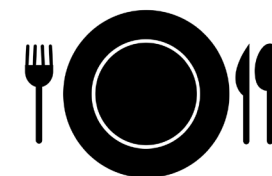
Text Classifieds, up to 250 characters .....	FREE
Text Classifieds, up to 250 characters and one photo. ....	\$5.00
Business Card ad, 3.5"x2" .....	\$7.00
Quarter Page ad, 4.25"x3.75" .....	\$14.00
Half Page ad, 4.25"x 7.5" .....	\$25.00
Full Page ad 8.5"x7.5" .....	\$45.00

### PSA/PJSA Non-Member Advertising Rates

Text Classifieds, up to 250 characters .....	\$5.00
Text Classifieds, up to 250 characters and one photo. ....	\$7.00
Business Card ad, 3.5"x2" .....	\$7.00
Quarter Page ad, 4.25"x3.75" .....	\$14.00
Half Page ad, 4.25"x 7.5" .....	\$25.00
Full Page ad 8.5"x7.5" .....	\$45.00

## News

We want your news! Please send us any PSA/PJSA member show results, photos, and all other news related topics. Please email news items to [annie@annieduncan.com](mailto:annie@annieduncan.com), or mail to Annie Duncan, 470 Million Dollar Road, Halifax, PA, 17032.



## PSA Kitchen

Source: Pennsylvania Beef Council

## RANCH BURGERS



1 pound ground beef (95% lean)  
4 teaspoons Ranch Rub (recipe follows)  
4 whole wheat hamburger buns, split

1/4 cup prepared reduced-fat creamy ranch dressing  
2 tablespoons canned French-fried onions  
Romaine lettuce, tomato slices

### Instructions

1. Lightly shape ground beef into four 3/4-inch thick patties. Press Ranch Rub onto patties.
2. Place patties on grid over medium, ash-covered coals. Grill, covered, 11 to 15 minutes (over medium heat on preheated gas grill, covered, 13 to 14 minutes), until instant-read thermometer inserted horizontally into center registers 160°F, turning occasionally.
3. Serve in buns with dressing, onions, lettuce and tomato.

**Ranch Rub:** Combine 2 teaspoons sweet paprika, 2 teaspoons dried thyme, 1-1/2 teaspoons salt, 1 teaspoon garlic powder, 1 teaspoon onion powder, 1/2 teaspoon ground black pepper, 1/2 teaspoon ground red pepper and 1/2 teaspoon ground white pepper. Store in airtight container. Shake before using.

### Makes 4 servings

**Cook's Tip:** Cooking times are for fresh or thoroughly thawed ground beef. Color is not a reliable indicator of ground beef doneness.

If you have a favorite recipe you would like to share, please email to [annie@annieduncan.com](mailto:annie@annieduncan.com), or mail to Annie Duncan, 470 Million Dollar Road, Halifax, PA 17032.

## **PENNSYLVANIA SIMMENTAL ASSOCIATION**

Annie Duncan, Director

470 Million Dollar Road

Halifax, PA 17032

### **PSA DIRECTORS**

<b>David Downs</b> Jackson Center, PA (724) 376-7195 annettedowns@ymail.com	<b>Ron Dziembowski</b> Dudley, MA (508) 868-8836 RLUVSANGUS@aol.com	<b>Jeff Feight</b> Breezewood, PA (814) 735-3797 JNSSimmentals@yahoo.com	<b>Laurie Meyers</b> Halifax, PA (717) 350-2516 Laurie@pvsimm.com	<b>William T. Vossler</b> Gettysburg, PA (717) 337-1615 tvossler@comcast.net
<b>Annie Duncan</b> Halifax, PA (717) 350-2515 simmtalker@yahoo.com	<b>Bradley Feight</b> Breezewood, PA (814) 502-8973 feibra60@pct.edu	<b>Galen Graham</b> Felton, PA (717) 968-3643 niklenvalley@aol.com	<b>William Shoemaker</b> Manns Choice, PA (814) 624-0667 shoesim@yahoo.com	<b>Les Whitmoyer</b> Fredericksburg, PA (717) 865-2245 lwhitmoyer@hotmail.com

### **PSA OFFICERS**

#### **PSA President, Laurie Meyers**

Halifax, PA  
(717) 350-2516  
Laurie@pvsimm.com

#### **PSA Vice President, Bradley Feight**

Breezewood, PA  
(814) 502-8973  
feibra60@pct.edu

#### **PSA Secretary, Nichole Graham**

Felton, PA  
(717) 968-3643  
niklenvalley@aol.com

#### **PSA Treasurer, Patty Kuharic**

Middletown, PA 17057  
(717) 944-6745  
pattykuharic@aol.com

### **PSA NEWSLETTER EDITOR**

Annie Duncan • 717-350-2515 • annie@annieduncan.com