



Pennsylvania Fall Classic Sale

*Oct. 23, 2010 – 1 p.m.
Greene County Fairgrounds
Waynesburg, PA*

**Sponsored by
Pennsylvania Simmental Association
Open Heifers - Bred Heifers - Cow/Calf Pairs
Genetic Lots - Bulls**

Welcome Breeders,

Welcome to the 2010 PA Simmental Fall Classic Sale in Waynesburg. I would like to invite you to come see for yourself why this sale is one of the longest running sales in the Eastern U.S. It is not only the high quality cattle in the sale, but just as importantly, the quality breeders that consign to the sale year after year that have made this sale so successful. It has been a privilege to work with these consigners. Breds are from the top of replacement pens, many of which are AI sired and AI bred to calving ease bulls. There are many fancy open show heifer prospects already with show ring success and that are designed to make efficient brood cows. A good selection of long yearling bulls come to the sale ready to handle several cows and young bulls that will be ready for spring. The bulls have excellent pedigrees and EPDs to work in a variety of breeding situations. Come and take a look around and you'll be glad you did. Contact myself, Dalton Lundy, or John Spiker if you have any questions.

Sincerely yours,

Chris & Kellee Brown

- Information -
2010 Pennsylvania Fall Classic
Saturday, Oct. 23 - 1 p.m.
Greene County Fairgrounds
Waynesburg, PA

Sale Day Phone
(304)290-8383 Chris Brown cell • (502)727-6898 Dalton Lundy cell
(304)677-0255 Col. John Spiker cell

*Thank you Allflex
for providing the
PA Simmental
Fall Classic Sale
with quality ear tags!*

**Contact Dave McElhaney at (724) 494-6199
or dmcelhaney@allflexusa.com
for all your ID needs!**

Sale Manager: Chris Brown, (304) 290-8383
Sale Consultant: Dalton Lundy, (502) 727-6898
Auctioneer: Col. John Spiker, (304) 844-7915
Ringman: David Spiker, (304) 813-6550

Lodging
Comfort Inn, (724) 627-3700
Econo Lodge, (724) 627-5544
Super 8, (724) 627-8880

Health
All cattle will be vaccinated and tested for interstate shipment.

Terms and Conditions
Cash or check day of sale with proper ID. All animals will be sold in accordance with the suggested guidelines of the American Simmental Association, as printed on the inside back cover of this catalog. Up to date breeding and calving information will be supplied sale day. Any information announced sale day takes precedence over the sale catalog.

Featured Consigners

Campbell Show Calves
James Campbell
Sycamore, PA
(724) 236-0955
Lot #36

Frosty Springs Farm
Jim & Billie Cowell
Waynesburg, PA
(724) 627-8271
Lot #13, 37, 38, 39, 40

Bill and Kathy Miller
Waynesburg, PA
Lot #41, 58

Powell's Valley Simmentals
Laurie Fantom
Halifax, PA
(717) 350-2516
Lot #15, 16

Mountain View
Les Whitmoyer &
Sarah Zimmerman
Fredericksburg, PA
(717) 865-2245
Lot #17

Crum Circle C Ranch
Bob Crum
State College, PA
(814) 360-0481
Lot #18, 42

Belmont Steaks
Larry Bullis
Gettysburg, PA
(717) 334-6323
Lot #12

Elizabeth Weir
Mt. Wolf, PA
(717) 266-2530
Lot #14, 20, 59
Mark & Lisa Weir
Lot #44

Double RD Farm
Ron & Rhonda Dziembowski
Dudley, MA
(508) 943-6508
Lot #10, 20, 35, 43

Buena Vista Simmentals
Jim & Betty Bosley
Old Fields, WV
(304) 530-6636
Lot #5, 6, 19, 22, 26, 27

Messick Farms
Joe Messick
Middletown, PA
(717) 985-1021
Lot #24, 49, 50

Spring Hill Cattle Co.
Jessica Deets-Snyder
Meadville, PA
(717) 676-1097
Lot #3, 4, 23, 25

HSP Farms
Harold & Sally Peck
Lafayette, NJ
(973) 875-3164
Lot #21, 51, 52

Lady Bug Farms
Ken & Mary Gumeir
Middleport, NY
(716) 735-7904
Lot #45, 53, 54, 55

Double R Simmental
Bob Roberts
Cambridge, OH
(740) 435-0297
Lot #11, 30, 31

**Shoemaker Simmentals/Maple
Cove Breeders**
Bill Shoemaker
Manns Choice, PA
(814) 624-0667
Lot #7, 28, 29

SVJ Farm
Valerie Mankey
Amity, PA
(724) 554-0446
Lot #8, 9, 32

Simme Valley
Ken & Jeanne White
Groton, NY
(607) 423-4888
Lot #33, 56, 57

Cherokee Cattle
Ed Regula
Brownfield, PA
(724) 322-1813
Lot #46, 48, 60, 61

Classic Farms
Chris & Kellee Brown
Fairmont, WV
(304) 366-5353
Lot #34, 47

Lundy Farms
Dalton Lundy
Bardstown, KY
(502) 727-6898
Lot # 1, 2

"Thank You to all the individuals, breeders, and business supporters for making the 2010 Eastern Regional Classic a huge success!"

Sincerely,

Pennsylvania Junior Simmental Association Members

For All Your Livestock Handling Needs...

Bale Boss Hay Saver



Corral panels

Waterers

Ventilation Curtains

Installation available

for any product we
sell!

Bale Boss Wagon



Auto Release Self-locks



Mineral Feeder with
a Fly Killer Rover

Pasture Gates



Chutes - Alleys - Tubs



Palpation Cages - Scales

Allegheny Meadows

Joe & Doretta Speicher

Manns Choice PA

1-888-605-2422 or 814-733-2775

www.alleghenymeadows.com



by Allegheny Meadows



Farm signs

Pedigree signs

Banners

License plates

Step stakes

Vehicle magnets

Embryos

#1 Choice of Embryos

Dalton Lundy

#1A D&D Dunks Delight X Remington Red Label

DSC Mr Dunk

MGS

D&D Dunks Delight

Remington Red Label

21Y

MGD

#1B D&D Dunks Delight X Westfall Voyager

DSC Mr Dunk

SVJ Power Surge

D&D Dunks Delight

Westfall Voyager

21Y

Drake Summer Sister

#1C D&D Dunks Delight X Built Right

DSC Mr Dunk

CNS Dream On L186

D&D Dunks Delight

Built Right

21Y

NJC Ebony Antoinette

Dunks Delight is a D & D bred female that has really proven her worth. She has been successful as well as her progeny. When you pair Dunks Delight with these breed topping bulls you can't miss. Genetics like this are hard to come by. **Selling 3 Embryos guaranteeing 1 pregnancy if work is done by a certified embryologist.**

#2 Sadies Gem x Fixation

Dalton Lundy

HPF Ms Sadies Gem R086 X STF Fixation

SS Goldmine

STF Dominance

HPF Ms Sadies Gem R086

STF Fixation

SS Sadie

GCF Caliente

Sadie was the high selling cow at \$16,000 at Hudson Pines Farm selling to Pine Ridge. Sadie has a proven track record with calves being successful all over the country. ETs by Fixation - the hottest bull in the country. These are outcross genetics and you can't get semen on this young sire yet. But interest is high! He is a full sib to STF Onyx, who won NAILE last year. This is your chance to get in on some high stakes genetics! **Selling 3 Embryos guaranteeing 1 pregnancy if work is done by a certified embryologist.**



Sire of Lot #1C



Dam of Lot #2



Sire of Lot #2

Pregnancy

#3 STF-RP Savvy x SSC Baby

Spring Hill Cattle Co.

Purebred

Due: 4/16/11

GWS Ebony's Trademark 6N

HC Power Drive

STF/RP Savvy

SSC Baby

STF Desa Rae

Lchmn Blk Baldy

Implanted 7-15-2010, due 4-16-2011. Recip is a 2008 half blood Simme cow #20. This pregnancy has proven itself already by a bull calf that sold out of our pastures on the recip cow at 60 days old. This mating works with her. We no longer have aka "Morgan," she is now a donor for Ferguson Show Cattle in Ohio. Her progeny are all over the country and have made a huge impact on the Simmental breed. She makes them right and they will take you to the winner's circle. See the full sib bull to this pregnancy at NAILE with Ferguson Show Cattle.



Sire of Lot #3

Pregnancy

#4 3D x Double Red Meg

Spring Hill Cattle Co.

1/2 SM 1/2 AN Due: 1/1/11

Meyer Ranch 734

War Dynamite 620

3D

Double Red Meg

135

Jessica's Ms Flirt



Sire of Lot #4



Full sib to Lot #4

Implanted 3-31-2010, due 1-1-2011. Recip is a 2009 purebred Angus female that was a show heifer. The pregnancy is a full sib and only sib to sell to SHCC Midnight Star. She has a long list of winnings and proven success as a very young donor here at Spring Hill. Here is your opportunity to purchase a full sib to Star, her dam will never be flushed again. The donor dam has a proven record of success as Champion Cow/Calf pair at the 2009 PA Farm Show as an aged cow. A maternal sister to this mating was Champion Cow/Calf at the Eastern Regionals. Meg and Star are the type of easy functioning cattle we all want in our pastures, so don't pass up the chance to own your own Meg progeny.

Bulls

#5 BV Patrick

Buena Vista Simmentals ASA #2479417

Purebred BD:3/17/09 BW:80

CE•BW•WW•YW•MCE•MM•MWW•CW•MB•BF•REA

8.4•-0.2•28.9•50.6•7.3•-1.4•13.1•-7.8•.36•0.03•0.07

Nichols Legacy G151

Hart Jackpot J310

CNS Dream On L186

BRS Maria

CNS Sheeza Dream K107W

HH Blithe

BV Patrick is ready to breed your fall cows. He is solid black, moderate framed, and well muscled. Patrick's calving ease numbers are good.



Lot #5

#6 BV Ray

Buena Vista Simmentals ASA #2531155

Polled Purebred BD:10/25/09 BW:81

CE•BW•WW•YW•MCE•MM•MWW•CW•MB•BF•REA

8.3•0.9•34.2•65.5•0.3•2.1•19.2•3.0•0.18•0.04•0.16

HC Power Drive 88H

SAC MR MT 73G

Triple C El Poderoso Rey

HSP Rainbow Mr T

JSF Fiesta

HSP Jalapeno Rainbow

Purebred black bull with no Dream On in his pedigree. Ray is thick made and moderate. We bought his dam from Sally Peck at this sale. We showed his full sister this summer. A full sib was the high selling lot at the 2010 NC Sale for \$3,300.



Full sib to Lot #6

Bulls

#7 Shoemakers Olympic

Shoemaker Simmentals/MCB ASA #2503582

Polled Purebred BD:4/14/09 BW:77

CE•BW•WW•YW•MCE•MM•MWW•CW•MB•BF•REA

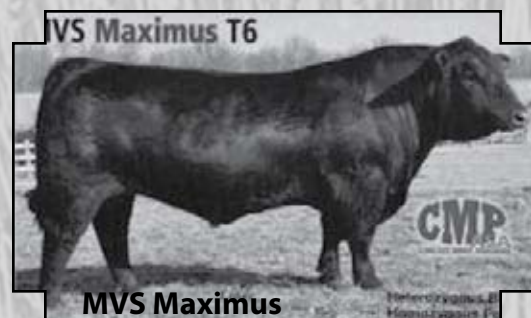
5.0•0.7•25.0•49.1•3.6•2.2•14.7•-7.0•0.14•0.01•-0.08

STF Mr Momentum H508 Nichols Blk Destiny

Shoemakers Commander Shoemakers Ms Olympic

Shoemakers Miss Marker Harts Black Dream

Solid black bull with granddam being full sister to dam of Tom Vossler's MVS Maximus National Champion Bull at the 2009 American Royal.



#8 SVJ DSC Tradition W103

SVJ Farm

ASA #2528183

Polled Purebred BD:4/14/09 BW:77

CE•BW•WW•YW•MCE•MM•MWW•CW•MB•BF•REA

7.4•1.2•35.8•56.1•0.0•2.0•19.9•-2.8•0.13•0.01•0.17

WLE Ebony's Trademark

Hart Black Oasis

GWS Ebony's Trademark 6N

WAR Sheza Dandy M751

NJC Ebony Antonionette

JBH Sheza Dandy

This special-made blaze-face Trademark son has style to burn. This exciting young herd sire has the performance needed in today's market and the showing. The Sheza Dandy breeding has stood the test of time. We offer him ready for fall, and heavy spring and summer breeding.

Take home some great Simmental and Simmental-influenced genetics!

Choice of Lots #9A & 9B

#9A SVJ Explorer's Dream X7

SVJ Farm

ASA #2542776

Polled Purebred BD:3/30/10 BW:78

CE•BW•WW•YW•MCE•MM•MWW•CW•MB•BF•REA

7.3•1.1•33•58.4•6.3•3.0•19.5•-12•0.13•0.02•0.15

Westfall Voyager 721P

Remington Red Label

BMR Explorer

SVJ Stylish Label U639

WW Miss My Dream 429R

SVJ Stylish One

#9B SVJ Explorer Plus X47

SVJ Farm

ASA #2542771

Polled Purebred BD:3/28/10 BW: 80

CE•BW•WW•YW•MCE•MM•MWW•CW•MB•BF•REA

7.9•0.2•30.5•58.3•6.8•5.4•20.6•-2.3•0.14•0.02•0.15

Westfall Voyager 721P

Triple C Majic Man

BMR Explorer

SVJ Fancys Magic U47

WW Miss My Dream 429R

SVJ Fancy Lady



Selling choice of Explorer bulls. This pedigree is stacked with champions. Sahara, the great granddam of both bulls was Grand Champion at WV State Fair, Eastern Nationals, Keystone International, and the North American International Livestock Expo, Jr. Show. Her offspring have sold to Dave Nichols of Nichols Farm, IA and to Gib Yardley, UT, to name a few. The dams of these two bulls are out of Sahara daughters, SVJ Stylish One and SVJ Fancy Lady, both of which had great show records. Now, the Explorer bull comes along, Grand Champion of the NAILE and his sire Westfall Voyager was Grand Champion at the prestigious American Royal. You have the choice of these two great genetic packages. Be on the leading edge of the Simmental genetics of the future!

Cow/Calf Pairs

#10 DRD Flashes BJ Dancer

Double RD Farm ASA #2381177
 Polled Purebred BD:9/19/06 BW:
 CE•BW•WW•YW•MCE•MM•MWW•CW•MB•BF•REA

4.5•2•30.3•53.6•-0.1•7.5•22.7•-2.7•-0.18•0.03•0.3

Harts Black Casino B408 JF New Dimension
 PVF-BF B26 Black Joker HEB Black Flash
 PVF-BF Maybelle C131 MF Miss Bullseye

Dancer is a 4 year old cow with a good udder and a long productive life ahead of her. She will have a STF Affirmed P44R bull calf at side on sale day.

#10A Dancer x Affirmed

Double RD Farm ASA #Pending
 Purebred Bull BD:8/30/10 BW:
 CE•BW•WW•YW•MCE•MM•MWW•CW•MB•BF•REA

LSS Thumper KG46 Black Joker
 STF Affirmed P44R DRD Flashes BJ Dancer
 STF Dumplin 444M HEB Black Flash



Lot #11



Lot #10

#11 RR Ms Lassie R08U

Double R Simmental ASA #2462121
 1/2 SM 1/2 AN BD:3/30/08 BW:81
 BW•WW•YW•MM•MWW•CW•MB•BF•REA

-1.0•18.6•40.2•2.0•11.3•-14.6•0.28•0.05•-0.22

HC Power Drive 88H

Triple C Im In Charge P1 Dixies Blackbird (PB AN)
 WS Peppers Black Star

R08U's dam, Dixies Blackbird, was a very successful show heifer for Zoe Myers of Mt. Sterling, KY. Her heifers are always the first to sell. Check out R08U's moderate frame score, depth of rib, and feminine lines.

#11A Lassie x Grandmaster

Double R Simmental ASA #Pending
 3/4 SM BD:9/1/10 BW: 72

PVF-BF BF26 Black Joker TripleC Im In Charge
 Ebonys Grand Master RR Ms Lassie R09U
 SOSF Ebonys Joy L123 Dixies Blackbird

Heifer calf.

Bred Heifers

#12 LBF Ms Perfection

Belmont Steaks Farm ASA #2491727
 Purebred BD:3/24/09 BW:75

CE•BW•WW•YW•MCE•MM•MWW•CW•MB•BF•REA
 9.8•-1.2•31.7•55.9•2.3•4.0•19.9•-6.1•0.18•0.025

Wheatland Bull 131L Nichols Blk Destiny D12
 SAND Ranch Hand LBF Nashawna
 SAND Lucky Charmer LBF Tonis Tigress

SUBSTITUTION LOT:

Perfection is a moderate framed, deep bodied, soggy made heifer that is bred to Shamrock. I bred her to Shamrock to add carcass value to the calf. She will make a good brood cow and her numbers are outstanding. I hate to part with her, but I had to scratch my cow/calf lot, I wanted to add a good cow back into the sale. She is bred right and her calf will have even better numbers than Perfection. **AI 6-16-2010 to Black Shamrock E157**

Bred Heifers

#13 FSF Chantily Lace

Frosty Springs Farm ASA #2492052

Purebred BD:2/7/09 BW:90

CE•BW•WW•YW•MCE•MM•MWW•CW•MB•BF•REA

1.4•3.7•38.8•66.9•3.7•3.2•22.6•7.6•0.05•0.02•0.27

CNS Dream On L186

Kenco/MF Powerline

Remington Red Label HR

FSF Paige

HS Reflections J34

FSF Tangi

Solid red moderate framed heifer that comes from the heart of our herd. She is the first bred heifer that we have ever offered in the PA Fall Sale or any sale. Check her out! **PE to FSF Gun Runner**

#14 MLW Miss Willa

Elizabeth Weir ASA #2489222

Purebred BD:3/4/09 BW:88

CE•BW•WW•YW•MCE•MM•MWW•CW•MB•BF•REA

6.6•1.3•31.3•59.7•0.09•1.5•17.2•0.1•0.11•0.01•0.11

WLE Excel

STF Aces High

Cooks Mr Excel

Circle S Miss Aces K40

BOZ Miss F563

GW Miss Lucky Buck

A charcoal spotted heifer that is clean, feminine, and eye-appealing. **PE and observed breeding on 8/13/10 to MCMF Lucky Power**

#15 PVSM Fairy Tail

Powell's Valley Simmentals ASA #2492961

Polled Purebred BD:2/1/09 BW:84

CE•BW•WW•YW•MCE•MM•MWW•CW•MB•BF•REA

8.8•-0.1•21.3•50.8•5.7•1.8•12.4•-6.7•0.05•0.01•-0.04

SRS Fortune 500

KSU Venom 101M

STF Mr Momentum H508

D&A Cinderella 1S

LRS Miss Zinger 508C

HWF Ms June

PVSM Fairy Tail is a homozygous black, halter broke Momentum daughter that combines performance, pedigree, and style in a complete package. She has depth, thickness, and muscle without losing femininity. Her dam is a very consistent producer for us and this heifer will follow in her footsteps. She is due 2/9/2011 and her calf will be homozygous black. **AI on 4/28/10 to HTP SVF In Dew Time**



Lot #15

#16 PVSM Sequoyah

Powell's Valley Simmentals ASA #2492960

Polled Purebred BD:1/28/09 BW:85

CE•BW•WW•YW•MCE•MM•MWW•CW•MB•BF•REA

4.7•1.2•38.4•74.2•2.8•2.3•21.5•8.6•0.30•0.01•0.17

GW Lucky Charm 665K

GW 24/7 662L

GW Lucky Man 644N

Cherokee Rose

GW Miss 600U 964J

Nelsons Destiny Rose

PVSM Sequoyah is a moderately framed, halter broke, double black and double polled heifer. She has the thickness, depth, and capacity to make an excellent easy keeping cow just like her dam who produces a great calf every year. This heifer is a favorite of visitors to the farm and is a difficult one for us to part with. Since she has no Dream On in her pedigree, we decided to continue that and bred her to an outcross Sim/Angus bull. Her calf should be a fancy show prospect. Due on 2/14/2011 and the calf will be a 3/4. **AI bred 5/3/10 to Sandeens SOS**



Lot #16

Bred Heifers

#17 BV Dream Thyme S05

Mountain View ASA #2366534
 Polled Purebred BD:9/21/06 BW:82
 CE•BW•WW•YW•MCE•MM•MWW•CW•MB•BF•REA
 10.3•0.9•36.3•60.2•7.7•-2.9•15.3•-0.7•0.34•0.02•0.15
 Nichols Legacy G151 Nichols Legacy G151
 CNS Dream On L186 BV Sweetheart N
 CNS Sheeza Dream K107W Trio 62L

An easy keeping and maternal mature cow with a great pedigree. She has produced excellent calves and will have a beautiful February calf. **AI on 5/21/10 to GWS Ebony's Trademark 6N**



Lot #17

#18 MCMF Noreen T55

Crum Circle C Ranch ASA #2395719
 Polled Purebred BD:4/29/07 BW:81
 CE•BW•WW•YW•MCE•MM•MWW•CW•MB•BF•REA
 6.8•-1.2•22.3•37.9•4.9•6.3•17.4•-16.8•0.24•0.02•0.07
 Nichols Legacy G151 Black Mick
 29P SCE Noreen M75
 Lucas Ms China 385M Deep Creek Ms Sky

This is a young, moderate-framed, economical-to-keep cow with good maternal characteristics. She puts her all into her calf, and was nursing when the picture was taken. She is bred to Roses Dream Boy 306, a "clubby" Dream On X Meyer 734 moderate-framed bull with style and muscle. **PE 4/28/10 - 8/16/10 to Roses Dream Boy 306, observed breeding on 5/20/10**



Lot #18

#19 BV Star Girl

Buena Vista Simmental ASA #2479420
 Polled Purebred BD:3/1/09 BW:77
 CE•BW•WW•YW•MCE•MM•MWW•CW•MB•BF•REA
 1.5•1.6•35.0•59.8•6.6•0.3•17.8•0.3•0.2•0.02•0.10
 CNS Dream On L186 Triple C Hidden Power
 SVF Star Power S802 BV Lassie
 SVF Sheza Star N902 Taylors BDC Lass 032Y

Star Girl is a spring bred heifer that has style and balance. She is due to calve the end of February to Vossler's National Champion, Maximus. The Maximus calves we've seen are thick and moderate. **AI bred 5/22/10 to MVS Maximus**



Sire of Lot #19 & 21

#20 MLW Miss Wendy

Elizabeth Weir ASA #2489223
 Purebred BD:6/13/09 BW:89
 CE•BW•WW•YW•MCE•MM•MWW•CW•MB•BF•REA
 7.7•2.9•33.3•62.2•0.7•5.4•22.1•3.9•0.11•0.01•0.04
 MCMF Savannah Power N11 Westfall Crossfire
 MCMF Lucky Power THC Elvira 162N
 MS PMS Lucky Girl Westfall Elvira

A nice black heifer that was a 4-H project. **Breeding info at sale**

#21 HSP Star Power

HSP Farms ASA #2517164
 Polled Purebred BD:2/27/09 BW:86
 CE•BW•WW•YW•MCE•MM•MWW•CW•MB•BF•REA
 2.2•0.6•34.3•62.8•5.8•4.1•21.2•0.8•0.23•0.02•0.30
 CNS Dream On L186 Nichols Blk Destiny
 SVF Star Power S802 YC Miss NBD D26-3
 SVF Sheza Star N902 YC Miss BIK B80

Star Power cow with Destiny on her bottom side and bred to Goldmine - should be an exciting February calf! **AI bred 5/9/10 to SS Goldmine**

Bred Heifers

#22 BV Macho Mama 10U

Buena Vista Simmentals ASA #2485919
P/S Purebred BD:11/6/08 BW:84
CE•BW•WW•YW•MCE•MM•MWW•CW•MB•BF•REA

2.5•2.8•37.3•63.8•3.1•2.7•21.4•4.4•0.21•0.00•0.10

Meyer Ranch 734 SRS J914 Preferred Beef
3C Macho M450 BZ Swain Penny 426P
3C Crocus H112B BS Miss Blackman P18H

This is a deep, thick-topped black heifer out of the popular Macho bull. Her granddam is Dr. Swain's Fleckvieh donor by Shilohs Blackman. We bought her dam at the Belles of the Bluegrass Sale and she is an excellent milker. She is bred to BV Mountain Dew who is homo-black. He is out of In Dew Time and his flushmate brother was the high-selling bull in last year's sale. **AI on 2/13/10 to Sand Ranch Hand, PE from 3/12 - 6/30/10 to BV Mountain Dew**



Lot #22

#23 SHCC Blackbird

Spring Hill Cattle Co. ASA #2490215
1/2 SM 1/2 AN BD:3/17/09 BW:89
BW•WW•YW•MM•MWW•CW•MB•BF•REA

1.0•28.8•48.9•0.4•14.8•-7.0•0.37•0.04•-0.14

Meyer Ranch 734
3C Macho M450 BZ Bee Bee
3C Crocus H112B

Here is a powerful Macho halfblood female that will make her mark. She has functionality and maternal traits as her two main goals. Having Three Trees Blackbird 3511 and Stevenson-Basin Blackbird in her pedigree, you can rest assured she will perform and keep making top ranking calves. Her dam's brother, Three Trees Rock On, has made history in the Angus breed for his performance and so will she. Her 3/4 baby due in April will just be the start to her proof that she can make those high demand percentage females. **AI bred 7/14/10 to Rough n Ready**



Lot #23

#24 MF Miss Trademark T148

Messick Farms ASA #2391025
Polled Purebred BD:2/17/07 BW:90
CE•BW•WW•YW•MCE•MM•MWW•CW•MB•BF•REA

5.1•1.8•33.5•48.8•3.2•7.4•24.2•-6.4•0.07•0.02•0.22

WLE Power Stroke MF Black Magic D6
GWS Ebonys Trademark 6N MF Miss Magic F481
NJC Ebony Antoinette MF Miss Superstar P32

Really good solid black Trademark cow that Matt showed to some purple ribbons along the way. Bred to the outstanding Angus sire Duff New Edition then pasture exposed to an excellent Triple C Majic Man bull out of Greg Stewart's high selling Gina cow. A high quality, halter broke female! **AI bred 6/5/10 to Duff New Edition 6108, PE 6/25 - 8/16/10 to Bummy's Black Majic**



Lot #24

Bred Heifers

#25 SHCC Dreamin of Paradise

Spring Hill Cattle Co. ASA #2376906
 Polled Purebred BD:4/8/07 BW:74
 CE•BW•WW•YW•MCE•MM•MWW•CW•MB•BF•REA

9.7•-0.4•29.1•50.2•8.0•-1.7•12.8•-8.3•0.25•0.03•0.16

Nichols Legacy G151 HC Power Drive 88H
 CNS Dream On L186 Stocks Paradise City
 CNS Sheza Dream K107W CircleS Ms Limit UpK

She is a terrific Dream On cow, that was very successful for Tristann as a many-time champion and supreme female, including Jr Calf Champion at 2008 Pa Farm Show. After she calves early in January, you can set her up for spring flushes. She puts the package together: moderate frame, loads of rib and overall power, and a powerful pedigree. Just think of the power and performance her SOS calf will have. **AI on 3/24/10 to Sandeens SOS**



Service Sire to Lot #25

#26 BV Trio's Dream 15U

Buena Vista Simmentals ASA #2485913
 Polled Purebred BD:11/24/08 BW:70
 CE•BW•WW•YW•MCE•MM•MWW•CW•MB•BF•REA

8.9•-0.3•32.0•54.7•8.6•-3.5•12.5•-5.6•0.27•0.02•0.07

Nichols Legacy G151 Black Bear 6D
 CNS Dream On L186 Trio 62L
 CNS Sheza Dream K107W Trio 35E

Well-balanced black heifer out of the now deceased Dream On. Her Trio Black Bear mother has been a great cow for us. She is bred to the exciting new Invasion son out of a Powerstroke dam - LMF Movin Forward for a March calf. **AI bred 6/13/10 to LMF Movin Forward**



Lot #26

#27 BV Gretchen 91

Buena Vista Simmentals ASA #2479419
 Polled Halfblood BD:3/5/09 BW:75
 BW•WW•YW•MM•MWW•CW•MB•BF•REA

0.4•26.1•45•-0.6•12.5•-10.2•0.37•0.05•-0.16

CNS Dream On L186
 SS Undreamabull R308 5
 JF Unforgettable Lady 208N

Here is a black half-blood that can fit into any program. She is deep-sided and clean-fronted. She could be used to raise club calves as well as percentage Simmentals after she calves at the end of February to Tom Vossler's National Champion bull. **AI bred 5/26/10 to MVS Maximus**



MVS Maximus

#28 Shoemakers Future Lady

Shoemaker Simmentals/MCB ASA #2503579
 Polled Purebred BD:7/1/09 BW:78
 CE•BW•WW•YW•MCE•MM•MWW•CW•MB•BF•REA

6.4•0.9•30.4•53.9•3.1•-0.6•14.6•-4.1•0.12•0.01•0.03

Shoemakers Real Deal Shoemakers Commander
 Shoemakers Cheech Shoemakers Lady06
 Bridle Bit Miss K016 Shoemakers Ms Vereen

Solid black and polled, very complete female. Granddam is full sister to Tom Vossler's MVS Maximus National Champion Bull at the 2009 American Royal. **AI bred 8/31/10 to Nichols Blk Destiny D12**

Bred Heifers

#29 Shoemakers Miss Pride II

Shoemaker Simmentals/MCB ASA #2503573

Polled Purebred BD:7/28/09 BW:88

CE•BW•WW•YW•MCE•MM•MWW•CW•MB•BF•REA

3.8•2.6•30•53.2•2.7•2.1•17.0•-2.0•0.09•0.01•-0.21

STF Mr Momentum H508 Charles Pride

Shoemakers Commander Shoemakers Miss Pride

Shoemakers Miss Marker IRS Majestic

Maternal sister to Shoemakers Top Gun, 2000 PA Farm Show Grand Champion which produced PA Beef Expo High Selling Cow/Calf for \$4,000. **AI on 8/21/10 to HTP SVF In Dew Time**



#30 RR Million Dollar Baby R04W

Double R Simmental ASA #2511269

Polled Purebred BD:4/1/09 BW:84

CE•BW•WW•YW•MCE•MM•MWW•CW•MB•BF•REA

7.9•0.6•31.4•64.6•2.9•3.7•19.4•2.2•.18•0.03•0.14

HC Power Drive 88H GW Lucky Dice 187H

Triple C Im In Charge P1 JJ/IC Million Dollar Baby

WS Peppers Black Star JSV/JJ Shes My Baby

This red heifer's dam was never beaten in class in Ohio's BEST program. She goes back to JJ and Indian Creek's many time champion Shes My Baby. **PE 4/14 - 8/31/10 to Shegogs Mr Macho**



#31 IC Mo Jazz U70

Double R Simmental ASA #2442421

Polled Purebred BD:9/5/08 BW:79

CE•BW•WW•YW•MCE•MM•MWW•CW•MB•BF•REA

6.1•1•29.8•67.4•3.2•-0.8•14.1•4.8•0.12•0.02•0.03

SRS Fortune 500 GW 24/7 662L

STF Mr Momentum H508 IC Jazz S59

LRS Ms Zinger 508C LECC Jazzmine

Jazz has the look of a good one. She has a gorgeous extended front end and balanced profile. **PE 4/14 - 8/31/10 to Shegogs Mr Macho**



#32 Hearthstone Tesse T728

SVJ Farm ASA #2429595

Polled Purebred BD:5/15/07 BW:76

CE•BW•WW•YW•MCE•MM•MWW•CW•MB•BF•REA

1.3•2.2•32.8•60.4•3.8•2.8•19.2•1.8•0.19•0•0.08

Meyer Ranch 734 HC Power Drive 88H

3C Macho M450 BZ MLF Bl Jessie K336

3C Crocus H112B Red Jessie T79

Her dam MLF Bl Jessie K336 was a top donor for the Schick program. This Power Drive dam brings power to the table and goes back to the ever popular Red Jessie T79. This female will produce you the great one! Tesse is bred to the very popular Explorer bull. This will be a very exciting mating. Tesse has years of potential ahead of her. **AI 6/15/10 to BMR Explorer, PE 6/30 - 8/30/10 to BMR Explorer**



Bred Heifers

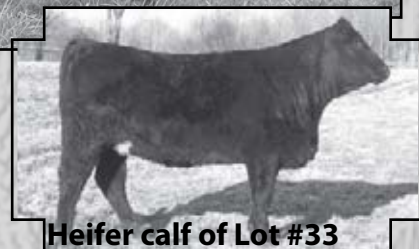
#33 3HF Nancy

Simme Valley ASA #2296423
 Polled Purebred BD:1/5/05 BW:75
 CE•BW•WW•YW•MCE•MM•MWW•CW•MB•BF•REA
 4.1•3.4•40.5•74.7•2.5•4.4•24.6•12•0.03•0.03•0.38
 HC Power Drive 88H Nichols Legacy G151
 Kenco/MF Powerline 204L RS&T Nambia 6N
 SAFN Glamour 11J SRF Miss 823L

Everyone's herd can use a cow like this. She is structurally correct, big footed, big gutted, with a beautiful udder. Simme Valley only sells cattle that will work well for you. This cow was born January 2005, calved November 2006, February 2008, February 2009, and March 2010. The only reason we are willing to part with her is that we have a beautiful replacement heifer out of her. Safe to AI date. **AI on 4/29/10 to Antoinette Star, PE MVS Maximus**



Lot #33



Heifer calf of Lot #33

#34 Classic Ms Edition

Classic Farms ASA #2528158
 1/2 SM 1/2 AN BD:4/2/09 BW:73
 BW•WW•YW•MM•MWW•CW•MB•BF•REA
 0.8•28.5•59.7•1.4•15.7•-0.3•0.21•0.05•-0.14
 OCC Genesis 872G Hart Jackpot J310
 Duff New Edition 6108 BRS Mannequin M68
 OCC Dixie Erica 814G BRS Miss Hot Pants J16

This heifer was shown by Tyler and has a great disposition. The SimAngus cross really hit with this heifer! Her dam is a great milker and easy keeper with eye appeal just like this heifer. **AI on 5/14/10 to GWS Ebonys Trademark**



Lot #34

Open Heifers

#35 DRD Lilly

Double RD Farm ASA #2524393
 Purebred BD:9/18/09 BW:
 CE•BW•WW•YW•MCE•MM•MWW•CW•MB•BF•REA
 7.0•4.1•42.3•80.1•1.9•2.8•23.9•16.4•0.15•0.02•0.17
 LRS Preferred Stock 370C Kenco/MF Powerline
 Ellingson Black Perfector HEB PL Delights Love
 Ellingson Blacktop F672 C/B Shear Delight

Lilly is out of a cow family that has performed extremely well for us as her granddam produced the top gaining Simmental bull and tied for high selling Simmental bull at \$3,000 at the 2010 PA Bull Test at 10 yrs of age. If Lilly performs anywhere near her dam and granddam you will be extremely pleased with her. She has also been shown successfully.



Lot #35

Open Heifers

#36 CSCX Love That Girl 200X

Campbell Show Calves ASA #2532321
 Polled Purebred BD:4/6/10 BW:83
 CE•BW•WW•YW•MCE•MM•MWW•CW•MB•BF•REA
 8.6•0.0•28.4•45.8•4.8•-4.0•10.2•-10.5•0.15•0.02•0.07
 R&R Warehouse K609 CNS Dream On L186
 DJ Salution S502 DHF Miss Daydreams
 Miss Jong F117 KJS Ms MT 13N
 Here is an excellent show heifer prospect sired by the up and coming bull, DJ Salution, and out of an excellent Dream On cow. Love That Girl will be competitive on all levels. She is a long-necked, deep-bodied, sound individual that you'll love. Enjoy showing her, but her real potential will be evident when she becomes a cow!

#38 FSF Jillian

Frosty Springs Farm ASA #2542754
 Purebred BD:2/27/10 BW:87
 CE•BW•WW•YW•MCE•MM•MWW•CW•MB•BF•REA
 9•1.4•40.2•63.9•3.9•-2.3•17.8•2.1•0.25•0.01•-0.09
 CNS Dream On L186 STF Too Red G64
 GCF Mr Amigo FSF Piper
 GCF Miss MT-Zel FSF Tapanga
 Solid red big stout Amigo heifer.

#40 FSF Tenley

Frosty Springs Farm ASA #2542757
 Purebred BD:3/24/10 BW:90
 CE•BW•WW•YW•MCE•MM•MWW•CW•MB•BF•REA
 5.5•1.3•21.9•42.4•-2.2•3.0•13.9•-10.1•0.2•0.02•-0.16
 STF Much More K300 STF Starquest N114
 STF Here I Come P373 Classic Star
 STF Miss 373L GTS Miss Bee Right
 Solid red heifer goes back to a red cow from Classic Farms. Out of our herd bull.

#37 FSF Sierra Rose

Frosty Springs Farm ASA #2542751
 Purebred BD:3/25/10 BW:78
 CE•BW•WW•YW•MCE•MM•MWW•CW•MB•BF•REA
 7.5•1.5•24.4•49.0•0.8•6.9•19.1•-5.8•0.12•0•-0.25
 STF Much More K300 Meyers Red Top
 STF Here I Come P373 FSF Holly
 STF Miss 373L FSF Whitney
 Dark red, blaze faced heifer, out of our herd bull which has produced many good ones.

#39 FSF Amber

Frosty Springs Farm ASA #2542752
 Purebred BD:3/5/10 BW:82
 CE•BW•WW•YW•MCE•MM•MWW•CW•MB•BF•REA
 7.7•1•39.6•61.2•3.9•-0.9•18.9•-0.2•0.22•0.02•0.04
 CNS Dream on L186 Remington Red Label HR
 GCF Mr Amigo FSF Tasha
 GCF Miss MT-Zel JEH Red Sun
 Stout heifer out of Amigo. Her dam was shown by Classic Farms.

#41 Ida

Bill & Kathy Miller ASA #Pending
 Purebred BD: BW:
 CE•BW•WW•YW•MCE•MM•MWW•CW•MB•BF•REA

Stylish red heifer. Will have lots of friends.

#42 Crum Maj-ic Magic 069X

Crum Circle C Ranch ASA #2539149
 Polled Purebred BD:2/12/10 BW:95
 CE•BW•WW•YW•MCE•MM•MWW•CW•MB•BF•REA
 10.5•1•38.6•74.9•5.9•5.9•25.2•8.8•0.22•0.04•0.12
 GW Lucky Dice 187H MCMF Keystone M62
 Hooks Majestic 31M MCMF Red Magic T84
 Hooks Koko 11K JS Magic-Fortune 134J
 Maj-ic Magic is a performance heifer, just like her dam. Look at those EPD's, all well into the top half of the breed. She is calving-ease, growth and maternal in one package. What a cow she will make!



Lot #42

Open Heifers

#43 DRD Passion

Double RD Farm ASA #2538522
 Purebred BD:4/13/10 BW:79
 CE•BW•WW•YW•MCE•MM•MWW•CW•MB•BF•REA
 12.8•0.8•37.2•53.0•6.2•-1.7•16.9•-5.6•0.22•0.01•0.25
 SS Goldmine L42 GCF First Dream P13
 ACC1 Hustler 2N DRD P2 Dream Girl
 CPR Korona HEB GM Straight Arrow

Passion is a solid black long sided clean fronted heifer out of a cow family that is deeply rooted in our herd and is part of our 2010 show string.



Lot #43

#44 MLW Miss Black Pepper

Mark and Lisa Weir ASA #2538399
 Purebred BD:2/22/10 BW:87
 CE•BW•WW•YW•MCE•MM•MWW•CW•MB•BF•REA
 6.6•1•26.2•52.4•1•8.5•21.6•-4.5•0.02•0.01•0.14
 MCMF Savannah Power N11 Black Joker
 MCMF Lucky Power T62 HWF Melanne
 MS PMS Lucky Girl D&D Black Eyed Susan

An open black heifer that is naturally thick with no creep feed and has a calm and quiet disposition.

#45 LBF Top Hand 913X

Lady Bug Farms ASA #2538388
 Polled Purebred BD:2/4/10 BW:85
 CE•BW•WW•YW•MCE•MM•MWW•CW•MB•BF•REA
 10.3•-0.4•27.0•49.5•2.8•3.9•17.4•-8.6•0.16•0•0.26
 Wheatland Bull 131 L Nichols Blk Destiny
 SAND Ranch Hand LBF Natalie
 SAND Lucky Charmer LBF Mariah

A Ranch Hand daughter with Destiny on the other side. She has a black blaze face and is straight and correct with a smooth shoulder. Her API is 113. An early calf ready to fit in your program. BVD PI neg.

#46 Cherokee Holly

Cherokee Cattle ASA #2541814
 Polled Purebred BD:3/7/10 BW:82
 CE•BW•WW•YW•MCE•MM•MWW•CW•MB•BF•REA
 7.8•1.1•36.6•64.1•3.6•2.2•20.5•2.1•0.16•0.03•0.23
 CNS Dream On L186 Kenco/MF Powerline
 GCF Mr Amigo Titan Peppermint Patty
 GCF Miss MT-Zel Titan Natalie BH

This flashy red baldie will be an outstanding show prospect. Being out of the Denver Champion Amigo will just add to her value. Her mother is one of our best milking purebreds.

#47 Classic Ms Trademark X74

Classic Farms ASA #Pending
 Polled Purebred BD:4/4/10 BW:81
 CE•BW•WW•YW•MCE•MM•MWW•CW•MB•BF•REA
 WLE Ebony's Trademark CNS Dream On L186
 GWS Ebony's Trademark 6N Classic Dreamin 24-7 U24
 Ebony's Antoinette G20

A stylish heifer that is very complete in her makeup. She comes from a great cow family that we have retained heifers from, and that have continued to impress us!

#48 Cherokee Sara

Cherokee Cattle ASA #2541816
 1/2 SM 1/2 AN BD:3/16/10 BW:77
 BW•WW•YW•MM•MWW•CW•MB•BF•REA
 -1.8•21.6•39.9•-0.3•10.5•-16.3•0.47•0.06•-0.20
 CNS Dream On L186 Angus 51
 GCF Mr Amigo
 GCF Miss MT-Zel

Sara is a deep sided 1/2 blood out of my best performance Angus cow. She has brood cow written all over her.



Sire of Lot #48

Open Heifers

#49 MF Miss Explorer W206

Messick Farms ASA #2519386
 Polled Purebred BD:9/17/09 BW:84
 CE•BW•WW•YW•MCE•MM•MWW•CW•MB•BF•REA
 9.5•0.2•27.7•50.5•5•2.8•16.6•-7.1•0.16•0.01•-0.07

Westfall Voyager 721P GW Lucky Break 047G
 BMR Explorer MF Miss Lucky Break 190M
 WW Miss My Dream 429R Shoemakers Proud Mary

Attractive September heifer by NAILE Champion BMR Explorer. Her Lucky Break dam has produced several good ones for us including the "Heartbreaker" female purchased by the Ritchey family a few years back. This one can show for two years and will make a very nice cow!



Lot #49

#50 MF Miss Full House W238

Messick Farms ASA #2519383
 Polled Purebred BD:11/11/09 BW:102
 CE•BW•WW•YW•MCE•MM•MWW•CW•MB•BF•REA
 1.3•5•36.3•62.7•3•7•25.2•7.1•-0.02•0.02•0.21

Kenco/MF Powerline 204L GFI Granite E07
 MF Full House N44 MF Miss Granite M38
 GFI Skippy 320K AR Heartstopper

Black baldy show heifer that will be very competitive in the fall division. She will make an excellent cow when you are done. Check out her maternal calving ease and milk numbers!



Lot #50

#51 HSP Gold Power

HSP Farms ASA #2517167
 Polled Purebred BD:8/3/09 BW:76
 CE•BW•WW•YW•MCE•MM•MWW•CW•MB•BF•REA
 12.6•-1•18.6•32.6•3.9•4.4•13.7•-19.5•0.26•0.01•0.19
 WLE Power Stroke SS Goldmine L42
 CNS Power Source 070K HSP D26 Goldmine
 CNS Valentina J95A YC Miss NBD D26-3

A nice August heifer ready to breed however you like.

#52 Miss Mulberry

HSP Farms ASA #2515078
 Polled Purebred BD:9/6/09 BW:77
 CE•BW•WW•YW•MCE•MM•MWW•CW•MB•BF•REA
 12.9•-2.2•28.2•49.7•2.4•7.6•21.7•-11.3•0.27•0.01•0.23
 Hooks Shear Force 38K Nichols Legacy G151
 RCR Stetson T17 Miss Blackberry
 RCR Sadie R29 HSP Raspberry

A fall heifer with a pedigree to love. She goes back to Legacy and Destiny both. Look her up sale day!

#53 LBF Who's My King

Lady Bug Farms ASA #2532499
 Polled Purebred BD:8/24/09 BW:103
 CE•BW•WW•YW•MCE•MM•MWW•CW•MB•BF•REA
 10.3•3.7•49•83.5•6.9•0.3•24.8•17.3•0.24•0.02•0.05
 HC Hummer 12M CNS Dream On L186
 RC Club King 040R LBF693S
 RC Miss Griffey 038N LBF U Who

Look at the pedigree - Club King, Dream On, and 600U! Look at the EPDs - API 113! A solid black high performance growth heifer. She puts it all together. Ready to breed for a fall calf or hold her for an early spring. BVD PI neg.

#54 LBF Red Velvet

Lady Bug Farms ASA #2538377
 Polled Purebred BD:2/1/10 BW:90
 CE•BW•WW•YW•MCE•MM•MWW•CW•MB•BF•REA
 7.9•1•44.2•71.4•-5.7•7.5•29.6•5.9•0.35•0.02•0.38
 Hooks Shear Force 38K LBR Crockett R81
 WS Beef Maker R13 LBF Toni Twos 816U
 DCR Ms Ribeye N72 412K

Solid red Beef Maker daughter from a Crockett heifer. She is long and thick well muscled, deep bodied, easy fleshing, super calf and she likes people! Her API is 122. Look at her growth and maternal EPDs. BVD PI neg.

Open Heifers

#55 LBF Abilgail

Lady Bug Farms ASA #2538376
 Polled Purebred BD:2/2/10 BW:72
 CE•BW•WW•YW•MCE•MM•MWW•CW•MB•BF•REA
 9.4•1.6•34.2•62.8•4.7•3.1•20.2•2.3•-0.07•0.01•0.13
 TNT Gunner N208 Lchmn Redeyed Jack 7006D
 TNT Top Gun R244 LBF Lassie
 TNT Miss Sadie M68 LBF Valerie

A Top Gun daughter from our Lassie cow. Lassie always has a good one, this is no exception. Abilgail is a solid red attractive high performance heifer. She is well muscled, correct, and has a great disposition. She has excellent growth and maternal EPDs. She will make you glad you bought her! BVD PI neg.

#57 Simme Valley Xalena

Simme Valley ASA #2528072
 Polled Purebred BD:2/16/10 BW:90
 CE•BW•WW•YW•MCE•MM•MWW•CW•MB•BF•REA
 9.8•-0.4•24.3•55.6•4.6•4.7•16.9•-4.4•0.14•0.03•0.07
 HC Power Drive 88H GW Lucky Dice 187H
 Simme Valley Macho As U MVS Luckys Isabel
 TripleC Sweeat As U J020C NRF Jenny 005

Awesome show heifer! She has the profile, walk, depth, and thickness, and ready for your next show. She's been in our showstring and has already won a Reserve Calf Champion. We've only been showing two spring calves out of about 15 heifers, so you know she's a good one. Two full sisters won Calf Champions at NYSE. It's been a long time since we've participated in this sale, so we wanted to come back with a bang!

#58 Anna

Bill and Kathy Miller ASA #Pending
 Polled Purebred BD: BW:
 CE•BW•WW•YW•MCE•MM•MWW•CW•MB•BF•REA

RC Stinger 072K
 TNT Gunner N208
 TNT Miss Honey L9
 Solid red Gunner heifer out of a first calf heifer.

#60 Cherokee Lady 101

Cherokee Cattle ASA #2541815
 3/4 SM 1/4 MX BD:2/3/10 BW:84
 CE•BW•WW•YW•MCE•MM•MWW•CW•MB•BF•REA
 6.6•0.8•26.7•41.4•3.0•1.5•14.9•-12.2•0.15•0.03•0.11
 WLE Power Stroke Classic Black Mail
 GWS Ebonys Trademark 6N Titan Rita BH
 NJC Ebony Antoinette TMF Fullback Teddy Bear

Lady is a very feminine, square hipped heifer with a clean front end. She will make an excellent show heifer.

#56 Simme Valley Xceptional

Simme Valley ASA #2528050
 Polled Purebred BD:3/6/10 BW:74
 CE•BW•WW•YW•MCE•MM•MWW•CW•MB•BF•REA
 7.7•-1.6•22.4•43.5•2.2•3.1•14.2•-13.8•0.11•0.02•0.15
 Simme Valley Macho As U Rains Limit Up
 Simme Valley Take Down Missing Oaks Liz
 SS Nadine Missing Oaks Whitney

Here's a stylish, feminine heifer that should work for a junior show project. She is sired by our Macho As U son, Take Down, out of SS Nadine, a Joker x Breath Taker daughter currently being flushed in coop with Hudson Pines Farm. Our full sister to Take Down won Supreme Champion OAB at two shows so far this year.



Lot #56

#59 Miss Sandy

Elizabeth Weir ASA #2529004
 Polled Purebred BD:8/8/09 BW:
 CE•BW•WW•YW•MCE•MM•MWW•CW•MB•BF•REA
 7.5•1.9•31.8•57.7•3.3•5.7•21.6•-0.3•0.11•-0.01•0.03
 MCMF Savannah Power N11 LLL Lambert K106
 MCMF Lucky Power Hoovers Miss Nellie
 MS PMS Lucky Girl Hoovers Miss Hanna
 Solid gray heifer. Easy keeper, thick muscling, and was shown as a 4-H project.

#61 Cherokee Speck 102

Cherokee Cattle ASA #2541817
 Polled Halfblood BD:3/6/10 BW:77
 BW•WW•YW•MM•MWW•CW•MB•BF•REA
 -0.3•23.4•38.6•4.7•16.4•-15.1•0.22•0.04•0.14
 WLE Power Stroke
 GWS Ebonys Trademark 6N Big Head
 NJC Ebony Antoinette

Speck is a medium framed, speckled faced, easy keeping half-blood heifer. Her dam is an excellent milker. Should make an excellent brood cow.

LOT Additional Lots

62 Open Heifer Owned by: David & Annette Downs
Stoneboro, PA (724)992.0973

ASA #: 2539128 BD: Feb 23, 2010 Tattoo: 1X
CE Brth Wean Year MCE Milk MWW Stay CW YG Marb BF REA API TI
EPD 5.3 10 26.6 55.8 2.4 4.5 128 72.4 0.04 0.05 0.04 0.07 89.0 54.0

WLE Power Stroke
HC Power Drive 88H
Kappes Lady Irish F88

D & A Annabelle 1X
PVF/BF BF26 Black Joker
D & A Moonie 11M
D & A Moon Beam

Comments: Annabelle is a correct and solid pedigreed open heifer by the immortal HC Power Drive and the cow that has been a consistent hard worker and profitable cow for us, D&A Moonie. Moonie has produced the Champion and Reserve Champion cows at the 2010 PA Farm show that are at work in our herd. Plus a couple of herd sires. We feel that Annabelle can be exhibited with the best of them, but her true value will be realized when she becomes a cow. Isn't that what it's all about.

LOT

63 Open Fall Heifer Owned by: Cody Downs
Stoneboro, PA (724)992.0973

ASA #: 2499460 BD: Sep. 13, 2009 Tattoo: 9W
CE Brth Wean Year MCE Milk MWW Stay CW YG Marb BF REA Shr API TI
EPD 10.5 0.0 28.7 58.9 4.7 0.6 13.8 21.3 21 0.02 0.14 0.01 0.01 115.0 61.0

STF Mr Momentum
SVF/NJC Mo Town
NJC/SVF Antoinette

D & A Twinkle 9W
LRS Preferred Stock
D & A Twilight 11T
D & A Skye

Comments: D&A Twinkle 9W is an eye appealing black baldie female that has a big top and a lot of capacity. Her pedigree and phenotype allow for a multitude of mating reaching your desired goal. Twinkle sells open and ready to breed to the bull of your choice.

LOT

64 Bred Female Owned by: Cody Downs
Stoneboro, PA (724)992.0973

ASA #: 2446789 BD: Sep. 28, 2008 Tattoo: 9U
CE Brth Wean Year MCE Milk MWW Stay CW YG Marb BF REA Shr API TI
EPD 11.6 71.4 24.5 41.0 8.5 3.5 15.8 161 0.05 0.22 0.04 0.05 111.3 61.8

CNS Dream On L186
HTP SVF in Dew Time
HTP SVF Honey Dew

D & A Tiny 9U
SS Goldmine
D & A Skye
D & A Moonie

AI Bred: 3/22/2010 AI Sire: Hooks Shear Force Reg# 2081939

Comments: Tiny is a moderate framed, deep-bodied female from the heart of our herd and probably our best cow family. We only offer Tiny for sale as we must maintain a small quality herd and she is a representation of some of our best. Don't miss out here. Tiny is due to calve January 1st to Hooks Shear Force.

Additional Lots

LOT Open Heifer

65

Owned by: Campbell Show Calves
Sycamore, PA (724)236.0955

ASA #: 2532318

BD: Feb 20, 2010

	CE	Brth	Wean	Year	MCE	Milk	MWW	Stay	CW	YG	Marb	BF	REA	API	TI
EPD	12.4	?1.6	39.3	66.4	5.8	?1.6	18.0	141	?0.7	0.08	0.28	0.04	0.04	118.3	72.2

Nichols Legacy G151

CNS Dream On L186

CNS Sheza Dream K107W

CSCX Dream Lady 160X

SS Ebony's Grandmaster

HILCO Grand Lady 107RT

HILCO Proud Lady 1107R

Comments: Dream Lady is a great show heifer prospect. Her dam was a many time champion.

LOT

Open Heifer

66

1/2 blood

Owned by: Classic Farms
Fairmont WV (304)366.5353

ASA #: pending

BD: Mar. 18, 2010

Meyer Ranch 734

3C Macho M450BZ

3C Crocus H112B

Classic Ms Macho X75

SITZ Traveler 8180

JA Lady 4170

EHF Lady Keystone 8012

Comments: A stylish baldy with rib and balance.

LOT

Open Heifer

67

1/2 Blood

Owned by: Classic Farms
Fairmont WV (304)366.5353

ASA #: pending

BD: Apr. 19, 2010

Who Made Who

Classic Ms Who

DSC Mr. Dunk

CCC Casino Dunkette

CCC Ms Black Casino

Comments: This baldy heifer will catch your eye. She has femininity and style, yet still shows the Simmental influence.

Additional Lots...

Lot

68

ETs

Owned by: Lundy Farms, KY

Selling 3 #1 Embryos

Triple C Lola X DHF Jades DreamWorks

**CNS Dream On L186
DHF Jades Dreamworks
RF Black Jade 950N**

**VDAR Lucys Boy
Triple C Lola M640
Hart Hollywood Queene 700**

Comments: Cow power deluxe is the best way to describe this mating, combining the up and coming donor RF Black Jade and the time tested ultra proven Hart Hollywood Queen. Lola was a prominent donor in the Wesner Livestock Enterprises, IN program. The power of Lola combined with the look and genetics of DreamWorks make this an exciting mating. Selling 3 embryos guaranteeing 1 pregnancy if work is done by a certified embryologist.

ASA Suggested Sale Terms & Conditions

BIDDING AND APPLICABLE LAW: All cattle listed in this offering comply with prevailing sale terms and conditions as set forth by the laws of the state wherein the sale is conducted. There are no warranties, expressed or implied, by either the auctioneer or consignor, except as set forth herein, as to the merchantability of fitness for any particular purpose of any animal offered in this sale. The right to bid or the right to reject the final bid, if done before the hammer falls, is reserved for all sellers unless otherwise announced from the sale block or as prohibited by law in the state wherein the sale is being conducted.

ANNOUNCEMENTS: Any change of information other than in the catalog will be announced from the auction block and such announcements shall take precedence over printed material.

All statements made from the auction block or those made by the seller (in private treaty) must be documented by seller if requested by the buyer at time of sale.

TERMS: Terms of sale are cash unless satisfactory credit arrangements have been made with the seller previous to the sale of any animal so affected.

PURCHASER'S RISK: Each animal becomes the property of and therefore is also the risk of the purchaser as soon as it is sold; except it shall be the obligation of the seller to see that animals are fed and cared for free of charge to purchaser, until loaded for shipment or until the expiration of twenty-four (24) hours after the sale, whichever occurs first.

HEALTH REQUIREMENTS:

1. All cattle entered for sale must meet the health regulations of the state in which they are sold. All other agreements regarding the health of the animal will be between the buyer and seller and should be documented in writing.

2. If sale cattle are returned to the seller for an adjustment, they must meet the health requirements of the state they are returned to.

CERTIFICATE OF REGISTRY: Each animal which is catalogued, offered and sold as a registered animal shall have a certificate of registry available at time of sale. When an animal is sold as "eligible for registry" or "registry applied for", the seller shall be responsible for obtaining the certificate of registry and for the proper transfer of the certificate to the purchaser including full payment of transfer fees.

IDENTIFICATION: Each animal at time of sale must have a readable tattoo or brand corresponding to that shown on the certificate of registration.

AUTHENTICITY OF PEDIGREE: When an animal, through parental validation, is determined to have an ancestry other than that reported on the registration certificate, the buyer shall be entitled to a refund of the purchase price from the seller upon return of the animal to the farm of the seller at the seller's expense. The animal in question, at the buyer's option, may be exchanged for another animal of equal value, or if agreeable with the buyer, the seller may have the certificate returned to the buyer. Any adjustment provided herein, if selected, shall absolve the seller from further liability for authenticity of pedigree to the buyer.

BREEDING GUARANTEES AND DEFINITIONS:

1. Females are guaranteed to be breeders, with the exception of: a) Female calves sold at side of dam b) Injury or disease occurring to the animal after time of sale c) Gross negligence or willful misconduct on the part of the purchaser d) Females used in ovum transplant after time of sale e) Cows sold with calf at side or a female that calves after sale to a breeding prior to the date of sale

2. Bulls are guaranteed to be breeders (definition as the ability to settle healthy cows by the time the bull is 18 months of age) with the exception of: a) Bull calves sold at side of dam b) Injury or disease occurring to the animal after time of sale c) Gross negligence or willful misconduct on the part of the purchaser d) Bulls shown competitively after sale

3. Any guarantees with respect to the ability to freeze semen shall be made by separate agreement between buyer and seller.

4. Safe in calf females are females that have been diagnosed pregnant by a competent veterinarian, and are pregnant at time of sale.

5. A bred female is a female known to have been served by a bull either by natural breeding or artificial insemination, but it does not necessarily mean that the female is safe in calf to that service.

6. A pasture bred female is a female that has been pastured with a designated bull and has been exposed for the time stated, but it does not necessarily mean that this female is safe in calf to that bull.

7. An open female is a non-pregnant animal.

8. Calves sold off their dams (split pairs) shall carry the full breeding guarantee.

PRIVILEGE OF PURCHASER TO EXAMINE: The purchaser of a female animal may have her examined within twenty-four (24) hours after the fall of the hammer and prior to removal from sale premises. The pregnancy status of breeding status of an female so examined, when found not to be as represented at the time of sale, is cause for the female to be returned to the seller as unsold.

EMBRYO TRANSFER:

1. Sellers should provide upon request a complete history of embryo transfer activity for any female offered for sale.

2. Withholding information on the existence of frozen embryos at the time of sale would be considered an unethical practice.

HORNED-SCURRED-POLLED: DEFINITIONS:

1. **HORNED** — An animal with a horn growth affixed to the skull that has or has not been removed.

2. **POLLED/SCURRED** — An animal with rudimentary horn growth that will not develop into a horn. The rudimentary horn growth may or may not become affixed to the skull at an older age.

3. **POLLED** — An animal with absence of horn growth. (An animal can have scurs and still be genetically polled.)

4. **SMOOTH POLLED** — A smooth-polled individual has no scurs and does not develop scurs later in life.

GUARANTEES:

1. If an animal is sold as polled or polled/scurred and proves to be horned, the seller shall be obligated to refund the purchase price upon return of the animal to the farm of the seller at the expense of the seller or may be exchanged for a polled animal of equal value whichever is acceptable to the buyer. The buyer has thirty (30) days from date of sale to notify the seller that an adjustment is in order.

2. If an animal is sold as smooth-polled and proves to be scurred, the seller shall be obligated to refund the price upon return of the animal to the farm of the seller at the expense of the seller or at the buyer's option shall be exchanged for a smooth-polled animal of equal value.

3. If an animal is sold as polled and develops scurs, the seller will not be obligated to make any adjustment as a scurred animal is considered polled.

4. If an animal is sold as polled and has scurs, it shall be so announced at the time of sale that the animal has scurs. If it is not announced and the buyer finds before the animal leaves the sale premises that the animal has scurs, the buyer must notify the seller of the findings. The seller shall then be obligated to refund the purchase price.

OPTIONS AND PRIVILEGES OF RETURN OR ADJUSTMENT:

The following adjustments do not preclude the right of the buyer and seller to mutually agree upon other terms and conditions for settlement of any dispute.

1. All claims for adjustment or refund must be made in writing either six (6) months from the date of sale or no later than when the animal reaches 24 months of age whichever occurs later, with the exception of claims involving misrepresentation of service sire or as otherwise provided herein.

2. In the event an animal is claimed to be a nonbreeder, the animal may be returned to the farm of the seller, at the buyer's expense, if in good physical condition, and the return is in compliance with the health requirements of the seller's state. The seller shall be entitled to a six (6) month trial period following the return of the animal in which to prove the animal is a breeder. If at the end of six (6) months the seller is unable to prove the animal is a breeder, the seller shall, at the option of buyer, replace the animal with another equal value or refund the purchase price. Either option shall be deemed full satisfaction and settlement.

3. If a female is sold as "safe in calf" to a given sire or sires on a specified date or dates and proves not to be as represented, the buyer is entitled to a refund of the purchase price from the seller upon return of the animal and resulting progeny thereof to the farm of the seller at the seller's expense.

4. If a female is sold as "open" and proves to be with calf at time of sale and examined pregnant within sixty (60) days after sale, the buyer may return the animal to the farm of the seller prior to calving for a refund of the full purchase price or for another animal of equal value, whichever acceptable to the buyer. It shall be the obligation of the seller to bear any expenses incurred for transportation of the animal in question to the farm of the seller.

TraitTrac Status: Sellers must identify the TraitTrac status of all animals or genetic material offered for sale. The Association considers it an unethical practice to misrepresent the TraitTrac status of any animal or genetic material.

LIMITATIONS OF OBLIGATIONS:

1. If the aforementioned suggested terms and conditions are adopted, they should constitute a contract between the buyer and seller for each animal sold under these terms, as such, should be binding upon both parties. Animals resold following purchase in a sale shall constitute a separate transaction and the privileges and obligations of the original two parties connected thereto are not covered by the terms and conditions of sale.

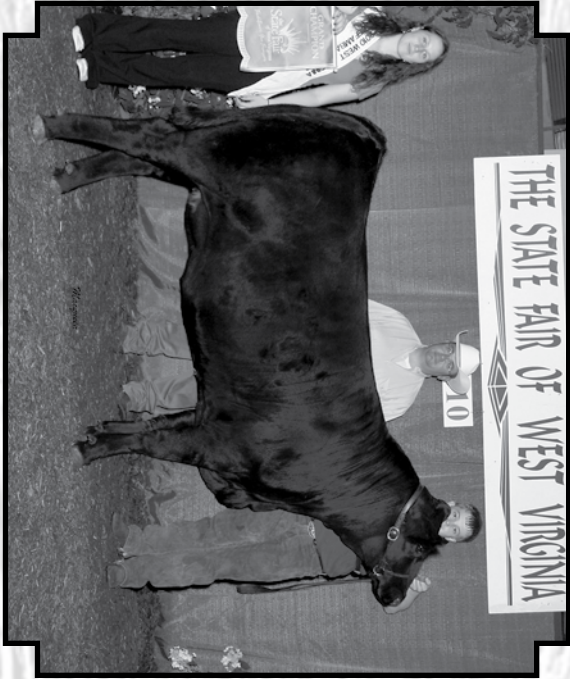
2. The American Simmental Association, its directors or employees are not in any way responsible or liable for enforcing the suggested terms and conditions of any agreement involving transactions between buyers and sellers.

Catalog by Stockyard Style, Emily Whitmoyer, stockyardstyle@gmail.com

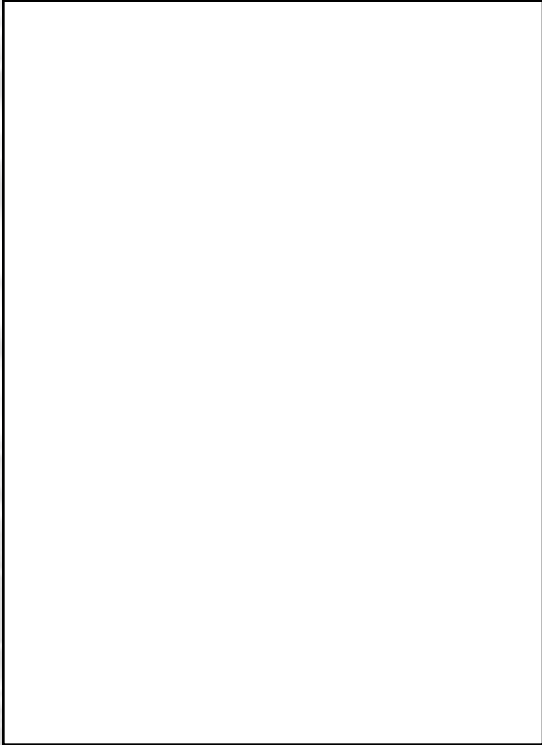
CHRIS BROWN
430 LEVELS ROAD
FAIRMONT, WV 26554

FIRST CLASS MAIL
TIME DATED MATERIAL

**Winning Genetics from the
Pennsylvania Fall Classic Sale!**



A 3/4 Simmental heifer, out of Dream On and an OCC Anchor cow, won Reserve Supreme of all Breeds at Tri-County Fair, West Va. and Grand Champion Percentage Simmental at West Va. State Fair. Owned by Logan Riggleman, of West Va.



RETURN SERVICE REQUESTED