

# Pennsylvania Simmental Association

## NEWSLETTER

FALL 2014



Find us on  
Facebook  
[www.facebook.com/pasimmental](http://www.facebook.com/pasimmental)

### Inside....

#### Page 2

PSA Members Win Award

#### Page 3

PA Tax Credit Applications

#### Page 4

CBE Helps Producers

#### Page 5

Ag Progress Days Report

#### Page 6

PA Fall Classic Sale Preview

#### Page 7

Changes to PSA Banquet

#### Page 8

PJSA News

#### Page 9

Dates To Remember

#### Page 9

PA Farm Show Stalling

#### Page 10

Photos from AJSA Nationals

#### Page 10

2015 Directory Advertising

#### Page 10

PSA Classifieds

#### Page 11

2015 Membership Form

## PA Fall Classic Sale Preview

*The Pennsylvania Fall Classic Simmental Sale is just around the corner!!*

Whether you are looking for purebred or percentage, we are offering an excellent set of replacement females, junior show heifer prospects, herd sires, cow/calf pairs, and more! *See page 6 for information*



Consigned to the PA Fall Classic Sale

### Bred Heifer

#### Purebred Simmental

BD: 1-4-13

Sire: SHS Navigator N2B

Dam: HPF Love Me U182

- Due in January to Upgrade
- Reserve Champion Simmental at the MD State Fair
- Consigned by Anvil Acres



## Frosty Springs Farm Wins BQA Award

Long-time PSA members James and Billie Cowell of Frosty Springs Farm, located in Waynesburg, PA, earned the 2014 Pennsylvania Beef Quality Assurance Award!

*Read the full story, beginning on page 2.*

## Change of Venue for 2015 PSA Meeting and Awards Banquet

The annual Pennsylvania Simmental Association Membership Meeting and Awards Banquet will be held in a new location—Hoss's Steak and Sea House in Enola. This move will be a fundraising opportunity for the PJSA, and offer easier parking and improved menu options!

*Please plan to attend, and bring a friend!!*

*See page 7 for details*

## 2014 Pennsylvania Beef Quality Assurance Award

*Congratulations to long-time Pennsylvania Simmental members James and Billie Cowell of Frosty Spring Farms for having won the prestigious BQA award!*

**F**rosty Springs Farm began in 1974, with a small herd of Hereford cows on a 47 acre farm. The Herefords were later cross bred to a Simmental bull. In 1985, the operation sold the crossbred cattle and bought a small herd of purebred Simmental cows for Jamie and Alissa, James and Billie's daughters, to show. The daughters exhibited in 4-H and regional events until 2002.



James and Billie Cowell, owners of Frosty Springs Farm.

In 1999, Frosty Springs Farm expanded its acreage from just 47 acres to more than 500 acres, raising approximately 60 cow/calf pairs, including a commercial herd of Red Angus cows. Frosty Springs Farm began selling freezer beef to 40 buyers in more than three states in 2006. Since their daughters left for college, James and Billie have been working the cattle and managing the farm on their own, while both maintaining off-farm jobs.

During the spring, summer and fall months, the cattle are on a rotational and intensive grazing program. Once grass quantity begins to deplete and calving season begins, cattle are moved to the feeding facilities. Frosty Springs Farm has two covered roughened concrete pads that serve as their feeding facilities where hay is fed and calving pens are developed. Cows are given ample room to deliver naturally, while being regularly monitored in a clean and safe environment. Bedding in the facilities is changed once a week to avoid disease transmission.

The primary source of nutrients in the winter months is round bales and square bales that have all been stored inside to prevent mold and limit waste. During the summer months, fertilizer and lime are applied according to guidelines to increase hay quality and nutrient values. Purchased feedstuffs are kept in a grain silo.

They have eliminated the use of corn silage on the farm to help with profitability. They winter over their cattle on hay and have used genetics to work toward a more average frame size. Between these two rather new practices they have seen a direct link to weaning weights increasing by 70 pounds. They attribute this to quality forage and genetic selection; they discovered the right combination for their farm.

Field fertilizer is collected from the feeding facilities in the manure storage unit, keeping that cost to zero. Feeding the cattle in the feeding facilities limits loss of hay, which reduces loss from pull out. Fresh water is available at all times either as city water or spring water. The cattle are fenced off from creeks to preserve water quality and keep cattle from potentially contaminated water from mining and gas well drilling.

*Cowells continued on page 3*

*Cowells continued from page 2*

The Cowells believe in the best management practices promoted by the BQA program. On their farm, the following practices have generated a direct impact on the operation's performance, productivity and profitability:

- Frosty Springs Farm is a Certified Accredited herd.
- They have worked closely with their veterinarian to maintain a John's disease-free herd.
- All calves are vaccinated and preconditioned prior to selling, which has added value.
- They have worked closely with their veterinarian to be sure all injections are given subcutaneously.
- They have chosen vaccination schedules and treatment protocols that fit the goal and emphasis of all subcutaneous shots for their cattle.

Since all shots are given subcutaneously, they have a low risk for injection site lesions and blemishes. They promote this quality point when selling freezer beef to customers. All shots are given subcutaneously in the neck region and withdraw times are followed according to manufacturer's guidelines. The Cowells administer antibiotics and vaccines in accordance to the label and follow proper storage requirements. Needles are changed between every animal and disposed of as solid waste. When transporting the livestock, cattle are loaded on a trailer that is lined with rubber mats to avoid slipping and to reduce any excess noise while loading. The trailer is cleaned after each use, with small loads hauled one at a time to avoid overcrowding.

In addition, Frosty Springs have three corral systems that are designed and approved facilities by Temple Grandin. To move cattle stress-free, the Cowells carefully considered the location of the corral systems. They installed heated watering troughs to allow cattle to have water at all times throughout the winter months.

In the past, the farm has hosted the Pennsylvania Cattlemen's Field Day to address an array of topics the industry faces from forward contracting, direct marketing, capitalizing on export marketing, BQA and much more.

They also are active members of the Greene County Conservation Board, American and Pennsylvania Simmental Associations, Greene County Farm Bureau, National Cattlemen's Beef Association, Project Grass, Penns Corner, Pennsylvania Livestock Association, Greene County Ag Compliance, Pennsylvania Cattlemen's Association and Center of Beef Excellence.

The farm has been recognized for a number of awards throughout their years of operation. Most recently, in 2012, they received the Pennsylvania Cattlemen's Special Appreciation Award and the Honorary West Greene Chapter FFA Degree.

## Applications Now Available for Pennsylvania Farm Conservation Tax Credit Program

**P**ennsylvania farmers who want to use best management practices or purchase on-farm conservation equipment can now apply for tax credits through the Resource Enhancement and Protection (REAP) program.

REAP is a tax credit program for agricultural producers who install best management practices or make equipment purchases that reduce erosion and sedimentation that impacts Pennsylvania's streams and watersheds.



The program, administered by the State Conservation Commission, gives agriculture producers an incentive to purchase conservation equipment and materials to better protect the environment.

"Conservation-minded capital improvements and management changes can be a challenge for farm families to afford," said Agriculture Secretary George Greig. "But Pennsylvania's investment-  
*continued on page 5*



## Two Programs Offered by CBE to Help PA Beef Producers

For more information about these or other programs conducted by the CBE, please see their website [www.beefexcellence.com](http://www.beefexcellence.com)



### Free Use of Cattle Handling Equipment

The equipment is available for use by Pennsylvania cattlemen on a first-come, first-serve basis for up to twenty-one days at a time. Users must be able to pick-up the equipment and return the equipment to its original location by the end of the allotted time. The equipment comes with its own trailer. A liability waiver must be signed by the user before the equipment may be obtained and the user assumes all risks and damages.

Please allow up to 4 weeks for your application to be reviewed and dates assessed for availability. A CBE member will contact you once your application has been processed. Please note that dates requested do not guarantee availability.

#### CBE Cattle Handling Chute Inventory

Sweep - 90 degree	7- 12' Panels	2 - Load bars
2 Curved panels	1 - 12' Walk through panel	1 - Scale tray
Radius bar	2 - 8' Panels	1 - Trailer
10' Swing gate	1 - Rancher chute	1 - Lock
12' Panel with alley frame	1 - Palpation cage	1 - Trailer ball hitch
2 - Sliding doors	1 - Scale head	1 - Spare tire

*"A nice unit, easy to pull and set up. Great for the producer who does not have a handling facility or rental farms without facilities. Portable scales are a great added tool." — Jim Cowell*

Long time PSA members and Simmental breeders Jim and Billie Cowell, Frosty Springs Farm, Waynesburg, PA, comment about CBE cattle handling equipment.



### Free RFID Animal ID Program

The Pennsylvania Center for Beef Excellence is now offering a statewide RFID Animal ID program to Pennsylvania producers. By participating in this voluntary official state tag management program, producers may receive free RFID tags (producers responsible for shipping) that comply with animal health traceability needs. Producers will enhance the marketability of local Pennsylvania beef and beef products, with an opportunity to earn premiums through source verified cattle. To request RFID tags for your cattle, contact Ann Nogan at 570-687-3150 or [anogancbe@gmail.com](mailto:anogancbe@gmail.com).

## 2014 Ag Progress Days

August 12-14, 2014 • Pennsylvania Furnace, Pennsylvania



After a soggy start on Tuesday, blue skies and cooler temperatures prevailed for Ag Progress days, held August 12-14, 2014, at Pennsylvania Furnace, Pennsylvania. Although the grass parking areas were muddy in places, the beautiful weather was the best in anyone's memory. Wednesday and Thursday were heavily attended, and our volunteers enjoyed talking about Simmental cattle with many visitors.

The two bred heifers on display, supplied by Laurie Meyers of Powell's Valley Simmentals, were perfectly happy with the numerous hands reaching for them. The Pennsylvania Simmental Association would like to extend a hearty "thank you" to the following members for their work at our booth: Vicki Varner, Ginger Woolcock, and Laurie Meyers.



Photos, clockwise beginning at top: display heifers enjoying dinner; PSA booth with literature; early Wednesday morning, as visitors were beginning to arrive; greyness gave way to beautiful skies over Ag Progress Days.

### Conservation Tax Credit continued from page 3

ments have provided our farmers with an additional boost to help protect the environment and especially the Chesapeake Bay. REAP is an incentive that will keep Pennsylvania productive for generations to come."

Farmers who have completed projects may submit applications beginning August 4, while those with proposed projects can submit applications beginning August 25. The projects will be considered on a first-come, first-served basis.

Private investors may act as a sponsor by providing capital to producers as a project is approved in return for tax credits. Any individual or business subject to taxation through Personal Income Tax, Corporate Net Income Tax, Bank Shares Tax or others is eligible to participate in REAP.

Since the program began in 2007, REAP has awarded tax credits to 3,500 projects totaling \$41.7 million. Public and private enterprises investments in REAP have contributed to the conservation projects, worth more than \$145 million.

REAP has helped reduce an estimated runoff of nearly 12 million pounds of nitrogen, 878,665 pounds of phosphorus and 881,966 tons of sediment through 2011.

Farmers may receive tax credits of up to \$150,000 per agricultural operation for 50 or 75 percent of the total project cost. The most common projects approved are for no-till planting equipment, waste storage facilities, conservation plans, nutrient management plans, and protecting heavy animal use areas like barnyards.

Applications for the 2014-2015 REAP program area available at [www.pda.state.pa.us/REAP](http://www.pda.state.pa.us/REAP) under "Forms," or by contacting Joel Semke at 717-705-4032 or [jsemke@pa.gov](mailto:jsemke@pa.gov).

Source: PA Department of Agriculture

## Pennsylvania Fall Classic Simmental Sale

Saturday, October 25, 2014

Greene County Fairgrounds, Waynesburg, PA

Offering an excellent set of replacement females, junior show heifer prospects, herd sires, cow/calf pairs, and more!

**Sale Manager  
Classic Sales**  
Chris Brown  
304-290-8383  
classicsim@aol.com



**Catalogs will soon be available!!**

For online catalog, see [www.pasimmental.com](http://www.pasimmental.com)

For print catalog, contact sale manager or complete form on [www.pasimmental.com](http://www.pasimmental.com)



**PSA President**  
Laurie Meyers  
717-350-2516  
Laurie@pvsimm.com



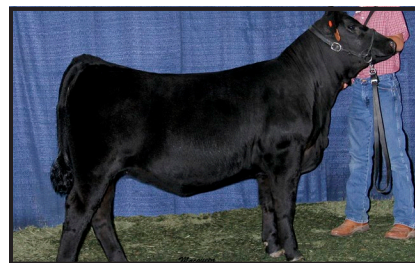
**Open Heifer**

½ Simmental, ½ Angus  
BD: 9-14-13

**Sire:** Hoover Dam

**Dam:** PVSM Made In America

This heifer will be lots of fun to show — she will be the perfect age for Eastern Regionals in 2015!



**Open Heifer:** Fall SimAngus heifer, ready for junior shows



**Bred Heifer:** Sired by Upgrade Bred to Grandmaster



**Bred Heifer:** Sired by Sweet Meat Bred to Kler Make it Rain, due in March



**Bred Heifer:** Bred to Upgrade, due in January — Reserve Champion Simmental at the Maryland State Fair

**Donation Cow/Calf Lot**

Proceeds from the sale of this lot will benefit the Southern New England Simmental Association, for their hosting of the 2015 AJSA Eastern Regionals.

Cow/calf pair generously donated by Harvey Baskin!



**Bull:** Sired by FBF1 Combustible — Reserve Champion Purebred bull at the West Virginia State Fair



**Bred Heifer:** Sired by Trademark Bred to In Dew Time

## POWELL'S VALLEY SIMMENTALS PA Fall Classic Sale Consignments

Saturday, October 25, 2014 • Greene County Fairgrounds, Waynesburg, PA

**Open Heifer**



**PVSM American Made**

BD: 9-14-13 • ½ Simmental, ½ Angus  
Hoover Dam X PVSM Made In America  
Stylish show heifer with an API 142.6!

**Bred Heifer**



**PVSM Sweetness**

BD: 3-3-13 • Purebred Simmental  
SAS T101 Sweet Meat X MD MS BLK Joker D26  
A.I. bred to KLER Make It Rain,  
due March 28, 2015.

**Bull**

**PVSM Firebirds New Edition**

Birthdate: 8-21-13

½ Simmental, ½ Angus

Duff New Edition 6108 X  
PVSM Firebird

Eddie offers a blend of some of the best genetics in both the Simmental and Angus breeds. Use him to add power and performance to your calf crop.

Website:  
[www.pvsimm.com](http://www.pvsimm.com)

**Contact Laurie Meyers with any questions!**

Phone: 717-350-2516 Email: [Laurie@pvsimm.com](mailto:Laurie@pvsimm.com)

See our website for catalog as soon as it is available!

## 2015 PSA Annual Meeting & Awards Banquet

Easy Parking • Large Menu • Everyone is invited!

The 2015 Pennsylvania Simmental Association annual Membership Meeting and Awards Banquet will be held at Hoss's Steak and Sea House, 743 Wertzville Road, Enola, Pennsylvania, 17025. With the change of venue, no payment to the PSA is needed—those attending will purchase their meals from the restaurant. Hoss's specializes in cooked-to-order steaks, chicken, and seafood complemented by their famous soup, salad, bread, and dessert bar which features over one hundred items, including made-from-scratch soups, warm hearth-baked breads, fruits, and desserts. Additionally, they offer a kid's menu and an American value menu, with meals for only \$10.49, which include the soup, salad, and dessert bar. This location also has a large parking lot—much easier for pickup trucks to navigate.

All PSA, PJSa, and non-members are invited to attend! Hoss's is going to generously donate a percentage of the sales from our banquet to the Pennsylvania Junior Simmental Association!

Please RSVP by December 27th, 2014, to our secretary Vicki Varner, 8436 Mountain Road, McAlisterville, PA 17049, 717-463-2513, email [gvarner@centurylink.net](mailto:gvarner@centurylink.net). A simple banquet registration form will also be available on our website, [www.pasimmental.com](http://www.pasimmental.com). Although no payment to the PSA is required, we do need an accurate head count for Hoss's to prepare the banquet room.

*We hope to see you there!!*

—Black—

—Red—

**SHOEMAKER'S SIMMENTAL**

*"Polled Performance Cattle"*

William E. Shoemaker

Phone: 814-624-0667

Cell: 412-721-8814

3839 Milligans Cove Road, Manns Choice, PA 15550

email: [shoesim@yahoo.com](mailto:shoesim@yahoo.com)

A Family Tradition of Quality since 1910



# PA Junior Simmental Association News

PJSA Members Shine at 4H Events

## Dauphin County 4H Fair

August 7, 2014 • Farm Show Complex, Harrisburg, PA



Ashley Dobbin of Halifax, PA (shown above with her Simmental influenced steer), was named Champion Junior Beef Showman, and went on to earn the Junior Clover Award.



PJSA Princess Lana Wolfgang of Mechanicsburg, PA, won Champion Crossbred with her November SimAngus (pictured above).



PJSA President Emmett Fox of Duncannon, PA, placed second with his Crossbred cow/calf pair (pictured above), and fourth in Beef Showmanship.



Wyatt Fox of Duncannon, PA, won first place with his Simmental summer yearling heifer (right). With his Crossbred cow/calf pair (left), he won Champion Cow/Calf and Overall Reserve Champion Breeding Beef. Wyatt also earned third place in Beef Showmanship.



## Pennsylvania State 4H Achievement Days

July 28-30, 2014 • Penn State University, State College, PA

### CONGRATULATIONS TO EMMETT AND WYATT FOX

4-H State Achievement Days is an educational three-day program for 4-H members (ages 13-18), sponsored by Penn State Extension. This annual event is held to demonstrate achievement of 4-H members and provide recognition of their accomplishments in competitive as well as non-competitive events.

The Fox brothers participated in the event, which draws kids from all over Pennsylvania. Wyatt placed third individually in Junior Livestock Judging and Emmett placed first in Compact Tractor Driving.

PJSA News continued on page 10



## DATES TO REMEMBER

Sept. 27-Oct. 5

KILE • Harrisburg, PA

Keystone International Livestock Expo will be held at the Farm Show Complex, Harrisburg, PA. For more information, see their website [www.keystoneinternational.state.pa.us/](http://www.keystoneinternational.state.pa.us/)

Friday, October 3  
Sunday, October 5

Open SimAngus/SimSolutions Show will begin at 8:00am, followed by Simmental Show  
Junior SimAngus/SimSolutions and Simmental Shows will follow Angus (begins at 8:00am)

October 24-25

Pennsylvania Fall Classic Sale • Waynesburg, PA

For print sale catalog or information, please contact sale manager Chris Brown (304-290-8383), or complete the simple form on our website, [www.pasimmental.com](http://www.pasimmental.com). For online catalog, please see PSA website, [www.pasimmental.com](http://www.pasimmental.com)!

Friday, October 24  
Saturday, October 25

Preview of Sale Cattle  
Simmental Sale – lunch sponsored by the PSA

December 15

Early Bird PSA Membership Discount Deadline

Join or renew your PSA membership by December 15th, 2014, and pay only \$35.00!

December 27

PSA Annual Meeting & Banquet Registration Deadline

No payment to the PSA is needed, however, please register for our Annual Meeting and Awards Banquet by completing the simple form on our website, [www.pasimmental.com](http://www.pasimmental.com), or contacting our secretary Vicki Varner, 8436 Mountain Road, McAlisterville, PA 17049, phone 717-463-2513, email: [gvarner@centurylink.net](mailto:gvarner@centurylink.net).

2015 – Happy New Year!

January 10-17

Pennsylvania State Farm Show

For more information about the PA Farm Show, see [www.farmshow.state.pa.us](http://www.farmshow.state.pa.us). Please see our website, [www.pasimmental.com](http://www.pasimmental.com), for Annual Meeting and Banquet information, or contact our secretary: Vicki Varner, 8436 Mountain Road, McAlisterville, PA 17049 phone 717-463-2513, email: [gvarner@centurylink.net](mailto:gvarner@centurylink.net)

Saturday, January 10

PSA's Annual Meeting and Awards Banquet

January 15

PSA Membership Deadline

Join or renew your PSA membership by January 15th, 2015, to be included in the 2015 Membership Directory!

January 31

2015 PSA Membership Directory Advertising Deadline

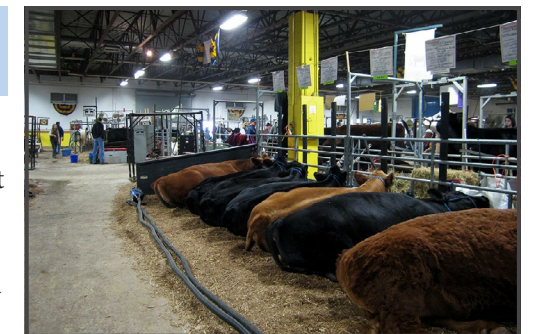
Print-ready ads for the 2015 Pennsylvania Simmental Association Membership Directory must be received by January 31, 2015.

## 2015 PA Farm Show Stalling

Just a quick reminder from the PA Farm Show Beef Committee:

Stalling request information must be clear. All parties involved must list all the individuals they want to be stalled with. Include the number of head and size/age of animals if you have mature animals. All the stalling assignments must be adhered to. Exhibitors moving stalls or taking extra space will be penalized.

Source: PA Farm Show Beef Committee



PJSA News continued from page 8

**AJSA National Classic XXXIV 2014**

July 13-19, 2014 • Kentucky Expo Center • Louisville, KY



Photos—clockwise, beginning with far left: PSA Director Ron Dziembowski; PJSA Treasurer Grace Graham with her 5th overall Purebred Cow/Calf pair (PJSA Vice President Levi Graham at calf's halter); fitting contest with Jackson Mattocks, Jordan Sommers, and Levi Graham; Levi Graham with his 15th overall market steer; (from left) DJ Gromlich, Jackson Mattocks, Levi Graham, Grace Graham, Donald Baron, Jordan Sommers, Nathan Snyder, and John Bertrand; Nathan Snyder with NikLen Susie. **Thank you** to Nichole Graham for these wonderful photographs!!!

**Pennsylvania Simmental Association**

**2015 Membership Directory Advertising**

Deadline: January 31, 2015

Must receive print-ready files by deadline.

**AD SIZES**

- Full Page\*.....5.5"W x 8.5"H
- Half Page..... 4.5W x 3.75"H
- Quarter Page Horizontal.....4.5"W x 1.87"H
- Quarter Page Vertical.....1.87" W x 3.75"H

\*Allow extra ¼" for full bleed ads.

**AD RATES**

Black and White	Color
Full Page (Full Bleed)..\$75.00	Full Page (Full Bleed)..\$150.00
Half Page.....\$50.00	Half Page.....\$100.00
Quarter Page.....\$35.00	Quarter Page.....\$70.00

**Now offering full bleed and color advertisements!**

If you are interested in advertising in the 2015 PSA Directory, please contact Laurie Meyers.

Laurie Meyers

Phone: 717-350-2516

Email: Laurie@pvsimm.com

Thank you for your support!



**PSA CLASSIFIEDS**

**Registered Simmental bull calves**, born Spring 2014. Black, black/blaze and red/blaze faced, A.I. sired by Shock Force, Chopper, and Mo Magic. Powell's Valley Simmentals. 717-350-2516 Web: www.pvsimm.com

**For Sale:** Red PB Simme February heifer calf sired by Long's Steel Shot, dam by Ankonian Red Caesar. Just weaned and ready to go. This calf has a great temperament and is begging for a junior to adopt her. We will begin to halter break. Asking price \$1800. Also, one black Simme heifer calf from February 2014 and one from March, and a simangus from February. Fred Benner, Serenity Hills Farms, Mifflintown, PA. CELL 717-320-2303

See page 11 to place your free classified advertisement!

**Advertising**

The PSA/PJSA is happy to now offer **FREE** text classifieds for its members in every newsletter! Classified advertisement may be for any item, animal, or a general farm ad, but please do not exceed two hundred fifty characters (not including spaces). Please email ads to annie@annieduncan.com, or mail to Annie Duncan, 470 Million Dollar Road, Halifax, PA, 17032. Full payments for ads must be received before the deadline to be printed.

**PSA Newsletter Ad Rates**

Winter 2014 Issue Deadline: November 10, 2014

PSA/PJSA Member Advertising Rates	PSA/PJSA Non-Member Advertising Rates
Text Classifieds, up to 250 characters ..... FREE	Text Classifieds, up to 250 characters ..... \$5.00
Text Classifieds, up to 250 characters and one photo..... \$5.00	Text Classifieds, up to 250 characters and one photo..... \$7.00
Business Card ad, 3.5"x2"..... \$7.00	Business Card ad, 3.5"x2"..... \$7.00
Quarter Page ad, 4.25"x3.75"..... \$14.00	Quarter Page ad, 4.25"x3.75"..... \$14.00
Half Page ad, 4.25"x 7.5"..... \$25.00	Half Page ad, 4.25"x 7.5"..... \$25.00
Full Page ad 8.5"x7.5"..... \$45.00	Full Page ad 8.5"x7.5"..... \$45.00

**News**

We want your news! Please send us any PSA/PJSA member show results, photos, and all other news related topics. Please email news items to annie@annieduncan.com, or mail to Annie Duncan, 470 Million Dollar Road, Halifax, PA, 17032.

**Pennsylvania Simmental Association**

**Application for Membership**



Member Name: \_\_\_\_\_ Farm Name: \_\_\_\_\_  
 Address: \_\_\_\_\_  
 City: \_\_\_\_\_ State: \_\_\_\_\_ Zip: \_\_\_\_\_ County: \_\_\_\_\_ Telephone Number: (\_\_\_\_) \_\_\_\_\_  
 Directions to Farm: \_\_\_\_\_  
 E-mail: \_\_\_\_\_ Website: \_\_\_\_\_

- \_\_\_\_\_ \$40.00 Full 2015 PSA Member
- \_\_\_\_\_ \$35.00 **Early Bird** Full 2015 PSA Member (To receive **Early Bird** pricing, must be postmarked by Dec. 15, 2014!)
- \_\_\_\_\_ \$10.00 2015 Junior Member (PJSA)

Please make checks payable to "Pennsylvania Simmental Association" and mail to the address below:

**Pennsylvania Simmental Association**  
 c/o Vicki Varner  
 8436 Mountain Road  
 McAlisterville, PA 17049

## PENNSYLVANIA SIMMENTAL ASSOCIATION

Annie Duncan, Director  
470 Million Dollar Road  
Halifax, PA 17032

### PSA DIRECTORS

<b>David Downs</b> Jackson Center, PA (724) 376-7195 ddowns2011@hotmail.com	<b>Ron Dziembowski</b> Dudley, MA (508) 868-8836 RLUVSANGUS@aol.com	<b>Jeff Feight</b> Breezewood, PA (814) 735-3797 JNSSimmentals@yahoo.com	<b>Laurie Meyers</b> Halifax, PA (717) 350-2516 Laurie@pvsimm.com	<b>William T. Vossler</b> Gettysburg, PA (717) 337-1615 tvossler@comcast.net
<b>Annie Duncan</b> Halifax, PA (717) 350-2515 simmtalker@yahoo.com	<b>Bradley Feight</b> Breezewood, PA (814) 502-8973 feibra60@pct.edu	<b>Galen Graham</b> Felton, PA (717) 968-3643 niklvalley@aol.com	<b>William Shoemaker</b> Manns Choice, PA (814) 624-0667 shoesim@yahoo.com	<b>Les Whitmoyer</b> Fredericksburg, PA (717) 865-2245 lwhitmoyer@hotmail.com

### PSA OFFICERS

#### PSA President, Laurie Meyers

Halifax, PA  
(717) 350-2516  
Laurie@pvsimm.com

#### PSA Vice President, Bradley Feight

Breezewood, PA  
(814) 502-8973  
feibra60@pct.edu

#### PSA Secretary, Vicki Varner

McAlisterville, PA  
(717) 463-2513  
gvarner@centurylink.net

#### PSA Treasurer, Jeff Feight

Breezewood, PA  
(814) 735-3797  
JNSSimmentals@yahoo.com

### PSA NEWSLETTER EDITOR

Annie Duncan • 717-350-2515 • annie@annieduncan.com