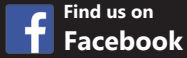


Pennsylvania Simmental Association



Find us on
Facebook
www.facebook.com/pasimmental

NEWSLETTER

SPRING 2015

Inside....

Pages 2-4

PA Farm Show Results

Page 2

PSA Positions

Page 4-5

PSA Awards & Elections

Page 5

PA Bull Test Results

Page 5

PJSA Fundraiser

Page 6

Spring into Excellence Preview

Page 7

ASA Meeting Schedule

Page 8

Huntingdon County Show

Page 9

Dates To Remember

Page 10

PA Beef Expo Schedule

Page 10

Report Abnormal Calves

Page 10

PSA Classifieds

Page 11

PSA Kitchen

Pennsylvania State Farm Show Simmental and AOB Show Results

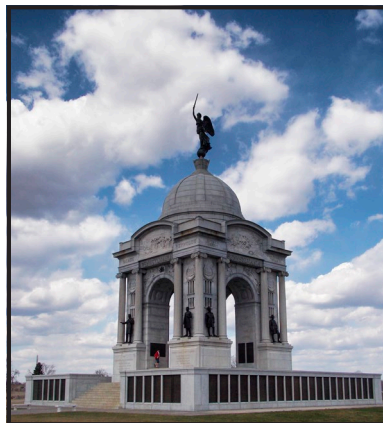
SimGenetics continued to dominate the AOB shows, including being named Supreme Champion Beef Female of the Junior Breeding Beef Show. PSA/PJSA members took the titles of Premier Exhibitor and Premier Breeder of the Simmental Show, among other high honors.



Left: SHCC KLC P'll Bea Star, owned and exhibited by PJSA member Scott Snyder, Titusville, PA, won Grand Champion Heifer of both the Open and Junior Shows!!!

(L-R): Kyle Fleener, Ethan Whiteside, Kelly Dietrich, Kelsey Delaplain, William Price, Jessica Snyder, Dave Snyder, judge Chris Cassady, Monica Debroski, Maria Angelo, Raymond Biebel, Makayla Stone, and Scott Snyder.

ASA Fall Meeting and Symposium



The Pennsylvania Simmental Association is proud to be hosting the American Simmental Association's annual Fall Board Meeting and Educational Symposium!!!

Events will be held in Gettysburg, PA, at the Wyndham Hotel Complex and nearby venues.

See page 7 for more...

Pennsylvania State Farm Show Results

January 10th-17th, 2015

Farm Show Complex, Harrisburg, PA

Open All Other Breeds Show — Friday, January 9th, 2015

Junior All Other Breeds and Simmental Shows — Sunday, January 11th, 2015

Open Simmental Show — Monday, January 12th, 2015

*PSA/PJSA Member

Open All Other Breeds Show — Judge: Jary Douglas

SimSolutions cattle dominated the Friday, January 9th, 2015, All Other Breeds show again this year, by capturing three of the four Grand Champion titles in the open show, and Grand Champion Heifer of the Junior AOB show, who went on to be named **Supreme Champion Beef Female** of the Junior Breeding Beef Show.



Grand Champion Open and Junior Shows AOB Female — TJSC Diamond 1A, owned by Jackson Mattocks, Crawford County.



Grand Champion AOB Bull — Freys Harley W51-B32, owned by Freddy Frey, Lancaster County.



Reserve Grand Champion AOB Bull — PVSM Smooth Mooves, owned by Laurie Meyers*, Dauphin County.

Pennsylvania Farm Show Results continued on page 3

—Black— —Red—

SHOEMAKER'S SIMMENTAL

"Polled Performance Cattle"

William E. Shoemaker
 Phone: 814-624-0667
 Cell: 412-721-8814

3839 Milligans Cove Road, Manns Choice, PA 15550
 email: shoesim@yahoo.com

A Family Tradition of Quality since 1910

PSA Positions

The Pennsylvania Simmental Association is looking for people to complete two important jobs — annual membership Directory layout and quarterly Newsletter.

The PSA is run by hard-working volunteers, and we need two more to fill these important jobs!!!!

For more information, please contact PSA President, Laurie Meyers:

Phone: 717-350-2516 • Email: Laurie@pvsimm.com

Pennsylvania Farm Show Results continued from page 2

Junior Simmental Show — Judge: Chris Cassady



Grand Champion Simmental Heifer — SHCC KLC I'll Be a Star, exhibited by Scott Snyder*, Titusville, Crawford County. (L-R): Kyle Fleener, Ethan Whiteside, Kelly Dietrich, Kelsey Delaplain, William Price, Jessica Snyder, Dave Snyder, judge Chris Cassady, Monica Debroski, Maria Angelo, Raymond Biebel, Makayla Stone, and Scott Snyder*.



Reserve Grand Champion Simmental Heifer — CSCX Ebony's Joy 204B, exhibited by Jackson Mattocks, Guys Mills, Crawford County. (L-R): James Campbell*, judge Chris Cassady, Jackson Mattocks

Open Simmental Show — Judge: Joseph Mackey



Grand Champion Simmental Heifer — SHCC KLC I'll Be a Star, exhibited by Scott Snyder*, Titusville, Crawford County.



Reserve Grand Champion Simmental Heifer — CARD Black Jade 607A, exhibited by Jenna Sassaman, Selinsgrove, Snyder County.

100th Annual Pennsylvania State Farm Show

The 2016 event will mark the Farm Show's 100th anniversary. In addition to authorizing a special 100th history book, the Pennsylvania Department of Agriculture will be incorporating special displays and features, many of which were suggested by exhibitors, to help celebrate the special milestone.

Pennsylvania Farm Show Results continued on page 4

Pennsylvania Farm Show Results continued from page 3

Open Simmental Show, continued — Judge: Joseph Mackey



Grand Champion Simmental Bull — CSCX Bad Habit 414B, exhibited by James and Jackie Campbell*, Campbell Show Calves, Sycamore, Greene County.



Reserve Grand Champion Simmental Bull — SSC Shelled Shocked 44B, exhibited by Greg Stewart*, Stewart's Simmental Cattle, Halifax, Dauphin County.

2015 Open Simmental Show	
Simmental Premier Exhibitor:	James & Jackie Campbell*, Campbell Show Calves, Sycamore, PA
Simmental Premier Breeder:	Greg Stewart*, Stewart's Simmental Cattle, Halifax, PA

2015 PSA Annual Meeting & Awards Banquet

January 10th, 2015 • Hoss's Steak & Sea House, Enola, PA

The PSA membership selected directors to fill four vacancies left by the expiring terms of William T. Vossler, Bradley Feight, Laurie Meyers, and by the resignation of Les Whitmoyer. Laurie Meyers was not eligible to run after serving two consecutive terms. Bradley Feight, Steve Hook, William T. Vossler, and Curry Wagner were elected to three year terms. The new board chose to retain all current officers — Laurie Meyers, president; Bradley Feight, vice president; Vicki Varner, secretary; and Jeff Feight, treasurer.

ANNUAL PSA AWARD WINNERS *PSA President Laurie Meyers presenting awards.*



Junior of the Year: Wyatt Fox



Senior of the Year: Jeff Feight

PSA Awards continued on page 5

PSA Awards continued from page 4



Family of the Year:
The Gromlich Family
Austin, Bruce, Colby, and DJ Gromlich



Breeder of the Year:
Stewart's Simmental Cattle
Greg, Sam (not pictured), and Grady Stewart

PA Performance Bull Test

Livestock Evaluation Center, Pennsylvania Furnace, PA



Congratulations to Pennsylvania Simmental Association member Greg Stewart, Stewart's Simmental Cattle, Halifax, PA, for owning the high-indexing Simmental bull of the 2015 Pennsylvania Performance Bull Test! The bull, SSC Top Secret 42B, is sired by Remington Secret Weapon 185 and out of the Dream On cow Lazy H Shez Too Cool W58. This is the second consecutive year that Stewart has owned the high-indexing Simmental bull.

Left: SSC Top Secret 42B, at the Livestock Evaluation Center, Pennsylvania Furnace, PA



PA Junior Simmental Association Fundraiser

Help the Juniors and eat at SHEETZ!!!!



The Pennsylvania Junior Simmental Association is selling Sheetz coupon booklets to help raise money. For only \$10.00, you will receive a coupon booklet coupons worth over \$20.00 in savings!! These savings are good until October 2017.

To purchase by mail, please contact PJSA advisor Sarah Limbert, 332 Bethel Road, Pine Grove, PA 17963, phone (570) 617-7620, email sarah13mae@hotmail.com. Coupon booklets will also be available at the PA Beef Expo, Stars & Stripes Sale, and other upcoming events.

Spring into Excellence Simmental Sale

Friday, March 27, 2015

Livestock Evaluation Center, Pennsylvania Furnace, PA



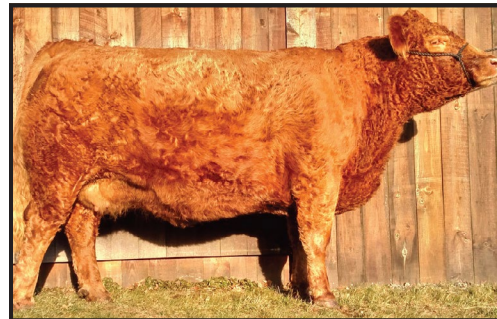
Bidding will be available LIVE online at cowbuyer.com!!



See www.pasimmental.com for online catalog!



**Lot #3 & 3A
Cow/Calf Pair**
SimSolutions • BD: 3-05-10
Sire: SC Mo Magic S47
Dam: Lazy H Burning Desire
Due 3-7-15 to RGRS SRE Two Step 20z.
Consigned by Sunrise Farms



Lot #10 — Bred Cow
PB • BD: 2-02-10
Sire: TNT Top Gun R244
Dam: LBF Lassie
A.I. bred to GCF Mr Amigo, due 4-24-15.



Lot #18 — Open Heifer
PB • BD: 3-17-14
Sire: MR HOC Broker
Dam: HA MS Perfect Happiness
Moderately framed, structurally sound, thickly made.



Lot #6 — Bred Heifer
PB • BD: 4-14-13
Sire: MVS Maximus
Dam: HPF MS Perfection T093
Due 7-10-15, In Dew Time (sexed heifer semen).



Lot #7 — Bred Heifer
PB • BD: 3-13-13
Sire: NikLen Reddi Set Go
Dam: NikLen Pansy
Bred 7-29-14 to WLE Uno Mas x549.

If you have any questions, please contact:

Sale Manager
Classic Sales
Chris Brown
304-290-8383
classicsim@aol.com

PSA President
Laurie Meyers
717-350-2516
Laurie@pvsimm.com

Simmental Sale will be held immediately following the Performance Tested Bull Sale at the LEC.

Livestock Evaluation Center (LEC)
1494 West Pine Grove Road
PA Furnace, PA 16865



Lot #12 — Open Heifer
PB • BD: 4-26-14
Sire: SVF/NJC Built Right N48
Dam: MVS Emma Fortune Jewel
Great candidate for 2015 Eastern Regionals.

POWELL'S VALLEY SIMMENTALS Stars & Stripes Sale Consignments

May 2, 2015 • Mountain View Farm, Gettysburg, PA



Bred Heifer
PVSM Butter Toffee
BD: 8-16-13 • Purebred Simmental
Triple C Ultimate Force X PVSM Butter Brickle
A.I. bred to Long's Steel Shot, due 9-2-15.
Halter broken.



Bred Heifer
PVSM Firefly Magic
BD: 9-15-13 • SimSolutions
SC Mo Magic S47 X PVSM Lightning Bug
A.I. bred to GWS/SCF Rendition, due 10-20-15.
Halter broken.

Bred Heifer
PVSM Miss Uppity
Birthdate: 9-2-13
SimSolutions
Mr NLC Upgrade U8676 X
Deep Creek Ms M031
A.I. bred to TLLC One Eyed Jack,
due 8-14-15.

Bred Heifer
PVSM Fairy Tale
Birthdate: 9-29-13
Purebred Simmental
Hooks Shear Force 38K X
D&A Cinderella 1S
A.I. bred to Mr NLC Upgrade U8676,
due 10-12-15.

Website:
www.pvsimm.com

Contact Laurie Meyers with any questions!
Phone: 717-350-2516 Email: Laurie@pvsimm.com

See our website for catalog as soon as it is available!

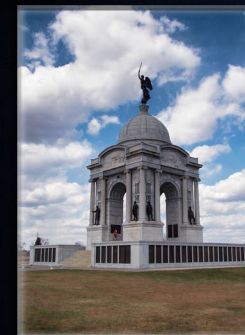
The Pennsylvania Simmental Association is proudly hosting

American Simmental Association's

Fall Board Meeting and Educational Symposium

September 14-17, 2015 • Wyndham Hotel Complex, Gettysburg, PA

All ASA and PSA members may participate in activities!



Monday, September 14th:
Educational Symposium and
PSA Hosted Dinner
Expert speakers in the fields of
breeding and marketing
Simmental cattle.

Tuesday, September 15th:
Interactive ASA Trustee
Committee Meetings
Your opportunity to meet with those
who decide the management
policies and programs of your
Simmental herd.

Wednesday, September 16th:
ASA Board of Trustees
Fall Meeting

Additional activities each day will include tours of the Gettysburg Battlefield and the local farm of U.S. President D. D. Eisenhower.

More information will be provided in forthcoming PSA newsletters, the PSA website, and *The Register* magazine.



Save the Date!

Friday, May 1st, 2015

Something for Everyone

4th Annual All Breed Sale



Sale is held in conjunction with the Big East Youth and Jackpot Show at Eastern States Expo Springfield, MA

Sponsored by:



If you have any questions, please contact:

Ron Dziembowski (508) 868-8836

Gary Bertrand (774) 272-1236

Go to SNESA.org for more information

Huntington County Cattle Battle

August 15th, 2015 • Huntington County Fairgrounds



The Huntington County Cattle Battle will take place Saturday, August 15th, 2015, at the Huntington Fair Grounds, Huntingdon, PA. It is open for all ages, and registered stock of any breed.

Show registration deadline is July 1st, 2015 — entry details will soon be available.

Huntingdon County Fairgrounds
10455 Fairgrounds Access Road
Huntingdon, PA 16652

For more information about the cattle show, please contact:

John Nichols, phone 814-934-9457



DATES TO REMEMBER

March 26-28

PA Beef Expo • Harrisburg/PA Furnace, PA
Activities will be split between the Livestock Evaluation Center, PA Furnace, PA and the PA Farm Show Complex, Harrisburg, PA. See page 10 for full Expo schedule. Please see page 6 for more information about our Spring into Excellence Sale!

Thursday, March 26

Friday, March 27

Saturday, March 28

Producer Education

Trade Show, PA Bull Test Sale, **Spring into Excellence Sale**, PCA Annual Banquet/Meeting, Skillathon and Quiz Bowl

Trade Show, Jackpot Show — Steers immediately following Heifers,

March 27

Spring into Excellence Simmental Sale/Bull Test Sale • PA Furnace, PA
Spring into Excellence Simmental Sale and PA Performance Tested Bull Sale will be held in conjunction with the Pennsylvania Beef Expo. Please see page 6 for more information, including Simmental sale preview. For Simmental catalog, please contact sale manager Chris Brown 304-290-8383. Bidding will be available LIVE online at cowbuyer.com!!

May 1

Something for Everyone All Breed Sale • Springfield, MA
Sale is held in conjunction with the Big East Youth and Jackpot Show at Eastern States Expo. For more information, go to SNESA.org.

May 2

Stars & Stripes Sale • Gettysburg, PA
Hosted by Tom and Barbara Vossler, Mountain View Simmentals.

June 24-27

AJSA Eastern Regional Classic • West Springfield, MA
The Eastern Regionals is being hosted by the Southern New England Simmental Association, at the Eastern State Exposition, West Springfield, MA.

July 5-11

AJSA National Classic • Brazos County Expo Center, College Station, TX

August 18-20

Ag Progress Days • Pennsylvania Furnace, PA
Features fifty-five acres of exhibits, eighty-plus acres for crops and machinery demonstrations, and over four hundred exhibitors from thirty-four states and four provinces of Canada. Of the forty-five thousand expected attendees, over sixty percent are actively engaged in agriculture or related professions. Please visit the PSA booth!!

September 14-17

ASA Educational Symposium & Fall Board Meeting • Gettysburg, PA
The Pennsylvania Simmental Association is proud to be hosting the American Simmental Association's annual Educational Symposium and Fall Board Meeting. See page 7 for more information. Please plan to join us!!

2015 PA Fall Classic Sale

Have nice cattle and not sure where to market them??

Please consider consigning to the PA FALL CLASSIC SALE. With an average of over \$3000 at the 2014 Fall Classic, *THIS* is the time to sell!!!!

For more information, please contact:

Sale Manager Chris Brown 304-290-8383

Pennsylvania Beef Expo Schedule

March 26-28, 2015

All events split between the Livestock Evaluation Center and PA Farm Show Complex.

Office Headquarters

Jim Sharp
Farm Show Complex
2300 N Cameron St
Harrisburg PA 17110
717-787-2905
farmshow@pa.gov

PCA Office

Ann Nogan
127 Tompkinsville Road
Scott Township, PA 18433
570-254-6856
pacattlemen@aol.com

Show Chairman

Mike LaRue
630 Ridge Road
York Springs, PA 17372
717-557-8295
Mcrue25@hotmail.com

Thursday, March 26th (Farm Show Complex)

9:00 am – 12:00 noon.....Beef Quality Assurance Chute-Side Certification
1:00pm – 4:00pm..... Producer Education

Friday, March 27th (Events split between the LEC and Farm Show Complex)

10:00 am – 3:00 pm.....Trade Show Open (Farm Show Complex)
12:00 noon.....Performance Tested Bull Sale (LEC)
2:00 pm – 5:00 pm.....Cattle Check-In (Farm Show Complex)
3:00 pm?.....**Spring into Excellence Simmental Sale following Bull Sale — see page 6!!**
5:30 pm PCA Annual Banquet & Annual Meeting (Farm Show Complex)
RAFFLE PRIZES AWARDED AT BANQUET
7:00 pm – 9:30 pm.....Skillathon and Quiz Bowl (Farm Show Complex)

Saturday, March 28th (Farm Show Complex)

6:30 am – 8:00 amCattle Check-In
8:00 amTrade Show Open
9:00 am.....Jackpot Show — Steers immediately following Heifers

SILENT AUCTION AND GREAT FOOD AVAILABLE AT THE LEC

Livestock Evaluation Center (LEC)
1494 West Pine Grove Road
PA Furnace, PA 16865

Pennsylvania Farm Show Complex
2300 North Cameron Street
Harrisburg PA 17110-9443

How to Report Abnormal Calves

With calving season upon us, I am sure we will hear reports of abnormal calves. While we hope this is not your fate, the odds are some of our members will see something unusual. Many of these cases turn out to be environmental but it is important to report any odd calves to the ASA or another breed association. If it's the middle of the night and you aren't sure what samples to collect, start with these:

1. Take pictures or video of the calf showing the abnormality.
2. Collect DNA on the calf. If the calf is dead, you can harvest an ear and put it in the freezer (labelled in a bag) until you hear further instructions. If the calf is alive, a blood sample is best but will need to be sent soon. Whole blood can be used—either on a blood card or a purple top tube. Hair does not work for DNA on young calves.
3. Collect DNA from the parents if they weren't previously collected. This can be hair, blood, or semen.

You can send questions to jatkins@simmgene.com or call 573-239-2436.

Source: Dr. Jackie Atkins, *Have U Herd* blog

PSA CLASSIFIEDS

Registered Simmental and Simmental/Angus bulls, born fall 2014. Polled, black, black/blaze face, sired by One Eyed Jack, Chopper, Allegiance, and others. Powell's Valley Simmentals. Phone 717-350-2516 Web: www.pvsimm.com

See page 11 to place your free classified advertisement!

Advertising

The PSA/PJSA is happy to now offer **FREE** text classifieds for its members in every newsletter! Classified advertisement may be for any item, animal, or a general farm ad, but please do not exceed two hundred fifty characters (not including spaces). Please email ads to annie@annieduncan.com, or mail to Annie Duncan, 470 Million Dollar Road, Halifax, PA, 17032. Full payments for ads must be received before the deadline to be printed.

PSA Newsletter Ad Rates

Summer 2015 Issue Deadline: May 10, 2015

PSA/PJSA Member Advertising Rates

Text Classifieds, up to 250 characters FREE
Text Classifieds, up to 250 characters and one photo. \$5.00
Business Card ad, 3.5"x2"..... \$7.00
Quarter Page ad, 4.25"x3.75"..... \$14.00
Half Page ad, 4.25"x 7.5"..... \$25.00
Full Page ad 8.5"x7.5"..... \$45.00

PSA/PJSA Non-Member Advertising Rates

Text Classifieds, up to 250 characters \$5.00
Text Classifieds, up to 250 characters and one photo. \$7.00
Business Card ad, 3.5"x2"..... \$7.00
Quarter Page ad, 4.25"x3.75"..... \$14.00
Half Page ad, 4.25"x 7.5"..... \$25.00
Full Page ad 8.5"x7.5"..... \$45.00

News

We want your news! Please send us any PSA/PJSA member show results, photos, and all other news related topics. Please email news items to annie@annieduncan.com, or mail to Annie Duncan, 470 Million Dollar Road, Halifax, PA, 17032.



PSA Kitchen

Source: BeefItsWhatsForDinner.com

WILD WEST BEEF HASH



1 pound Ground Beef (95% lean)
3 cups frozen potatoes O'Brien
Salt and pepper
1 jar (15 to 16 ounces) prepared thick-and-chunky salsa
1 cup frozen corn

1/4 cup chopped fresh cilantro
1 cup shredded reduced-fat Cheddar cheese or Mexican cheese blend

Toppings: Reduced fat dairy sour cream, chopped fresh cilantro, lime wedges (optional)

Instructions

1. Spray large nonstick skillet with cooking spray; heat over medium heat until hot. Add potatoes; cook 10 to 12 minutes or until lightly browned, stirring occasionally. Remove from skillet. Keep warm.
2. Brown Ground Beef in same skillet over medium heat 8 to 10 minutes, breaking up into 3/4-inch crumbles and stirring occasionally. Remove drippings. Season beef with salt and pepper, as desired. Stir in salsa, corn and 1/4 cup cilantro; cook 5 minutes or until heated through, stirring occasionally. Stir in potatoes; sprinkle with cheese. Cook 1 to 2 minutes or until heated through and cheese is melted.
3. Serve with toppings, if desired.

Test Kitchen Tips — Cooking times are for fresh or thoroughly thawed Ground Beef. Ground Beef should be cooked to an internal temperature of 160°F. Color is not a reliable indicator of Ground Beef doneness.

If you have a favorite recipe you would like to share, please email to annie@annieduncan.com, or mail to Annie Duncan, 470 Million Dollar Road, Halifax, PA 17032.

PENNSYLVANIA SIMMENTAL ASSOCIATION

Annie Duncan, Director
470 Million Dollar Road
Halifax, PA 17032

PSA DIRECTORS

David Downs Jackson Center, PA (724) 376-7195 ddowns2011@hotmail.com	Ron Dziembowski Dudley, MA (508) 868-8836 RLUVSANGUS@aol.com	Jeff Feight Breezewood, PA (814) 735-3797 JNSSimmentals@yahoo.com	Steve Hook Middleburg, PA (570) 837-7020 stewanfarms@verizon.net	William T. Vossler Gettysburg, PA (717) 337-1615 tvossler@comcast.net
Annie Duncan Halifax, PA (717) 350-2515 simmtalker@yahoo.com	Bradley Feight Breezewood, PA (814) 502-8973 feibra60@pct.edu	Galen Graham Felton, PA (717) 968-3643 niklervalley@aol.com	William Shoemaker Manns Choice, PA (814) 624-0667 shoesim@yahoo.com	Curry Wagner Hummelstown, PA (717) 991-0387 Wagnerc@MHS-Pa.org

PSA OFFICERS

PSA President, Laurie Meyers

Halifax, PA
(717) 350-2516
Laurie@pvsimm.com

PSA Vice President, Bradley Feight

Breezewood, PA
(814) 502-8973
feibra60@pct.edu

PSA Secretary, Vicki Varner

McAlisterville, PA
(717) 463-2513
gvarner@centurylink.net

PSA Treasurer, Jeff Feight

Breezewood, PA
(814) 735-3797
JNSSimmentals@yahoo.com

PSA NEWSLETTER EDITOR

Annie Duncan • 717-350-2515 • annie@annieduncan.com